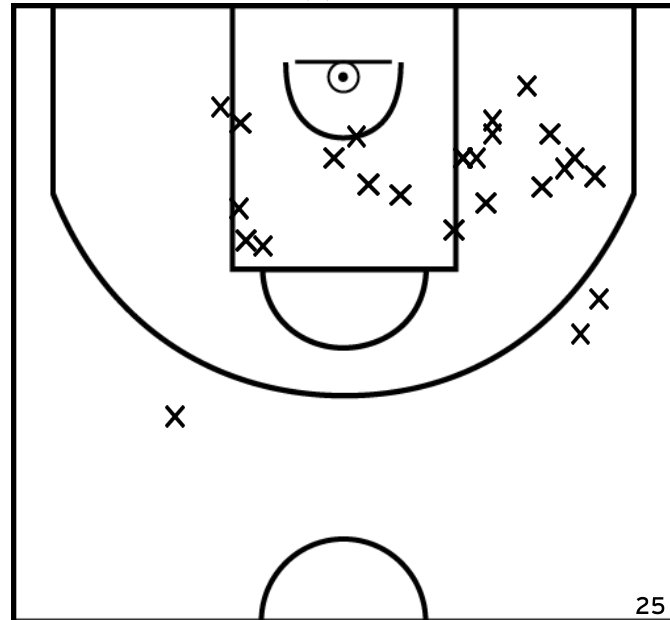


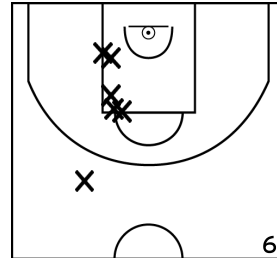
Rencontre: 5251 Date: 30/01/22 Heure: 10:30

Arbitre: BLOT K MICOUT G

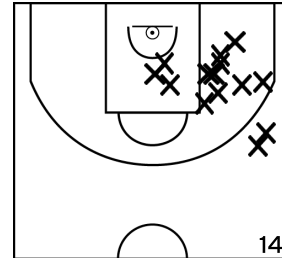
ÉQUIPE DB VAL DE REUIL (A)



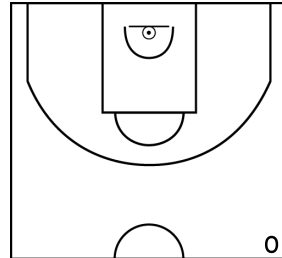
PÉRIODE 1



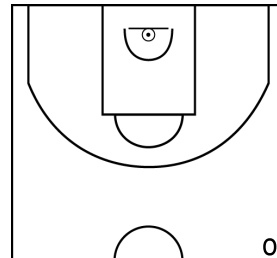
PÉRIODE 3



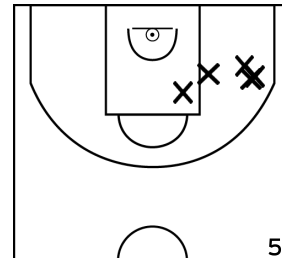
PROLONGATIONS



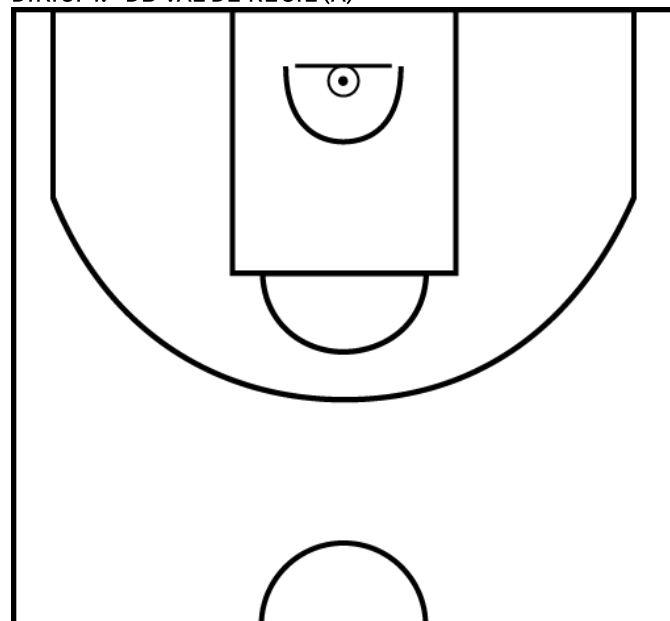
PÉRIODE 2



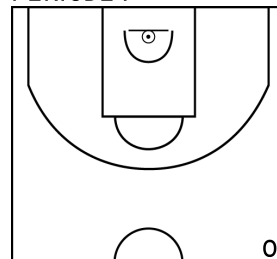
PÉRIODE 4



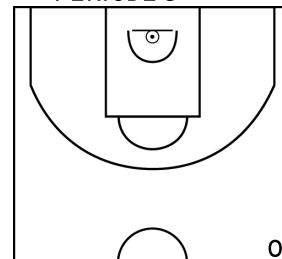
DIKICI Y. - DB VAL DE REUIL (A)



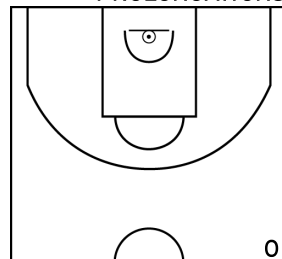
PÉRIODE 1



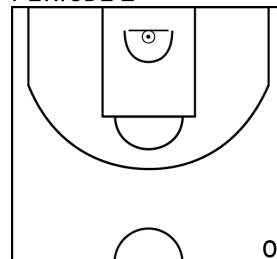
PÉRIODE 3



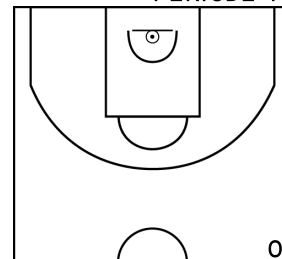
PROLONGATIONS



PÉRIODE 2



PÉRIODE 4



Rencontre: 5251 Date: 30/01/22 Heure: 10:30

Arbitre: BLOT K MICOUT G

FEUGRAY S. - DB VAL DE REUIL (A)



PÉRIODE 1



PÉRIODE 3



PROLONGATIONS



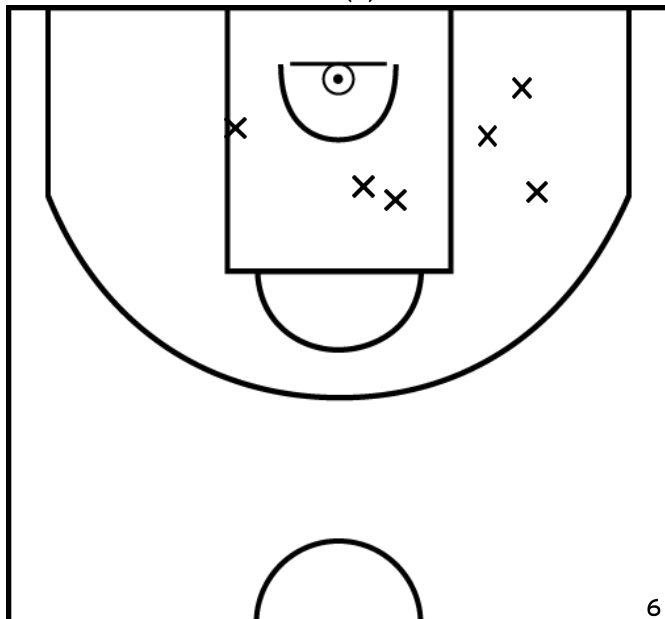
PÉRIODE 2



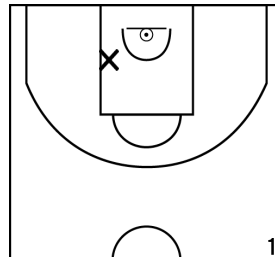
PÉRIODE 4



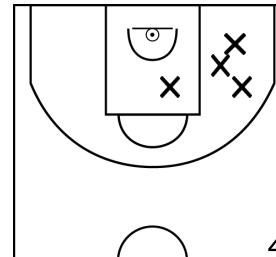
SUZEAU A. - DB VAL DE REUIL (A)



PÉRIODE 1



PÉRIODE 3



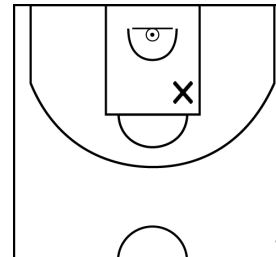
PROLONGATIONS



PÉRIODE 2



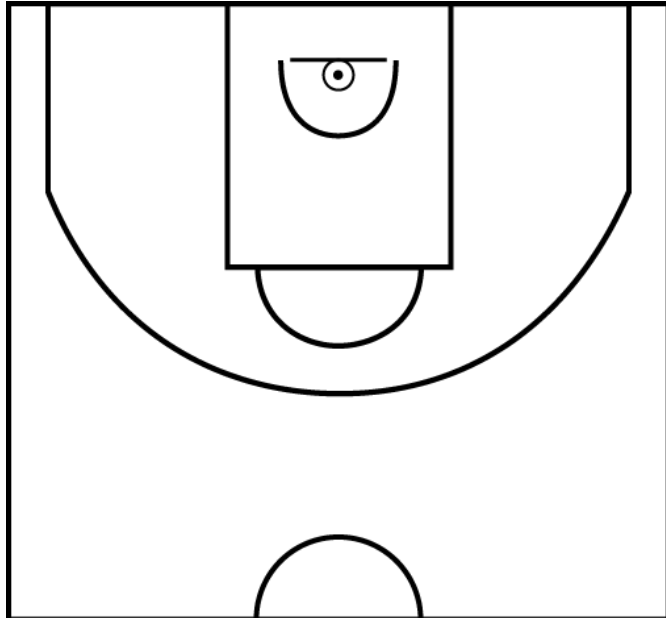
PÉRIODE 4



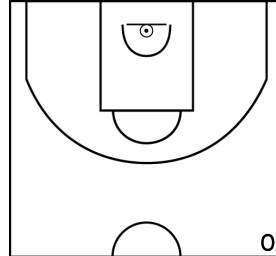
Rencontre: 5251 Date: 30/01/22 Heure: 10:30

Arbitre: BLOT K MICOUT G

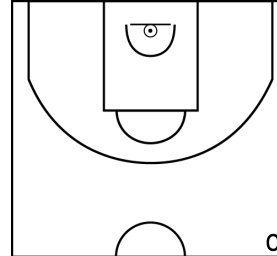
DUONG-VAN M. - DB VAL DE REUIL (A)



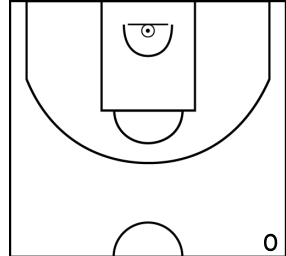
PÉRIODE 1



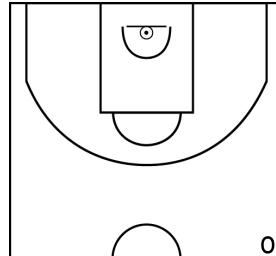
PÉRIODE 3



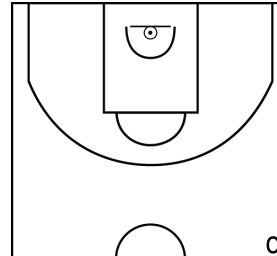
PROLONGATIONS



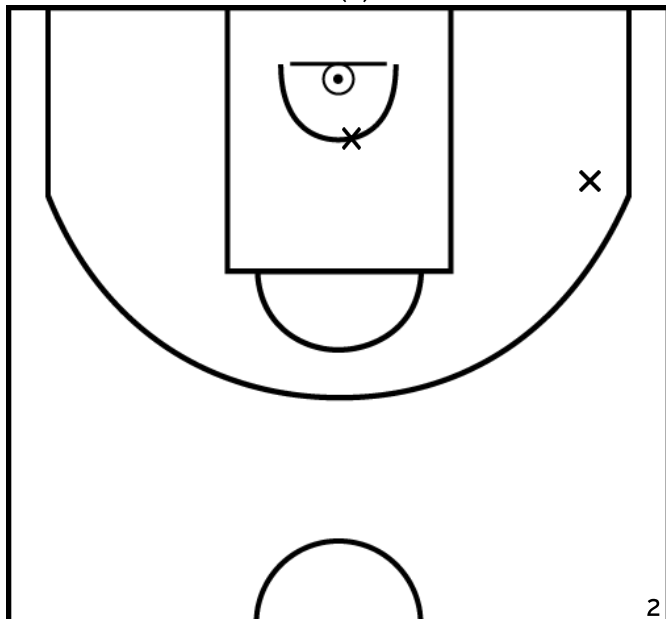
PÉRIODE 2



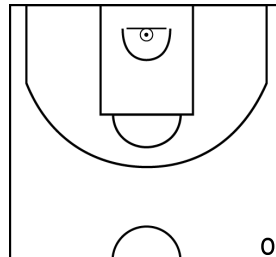
PÉRIODE 4



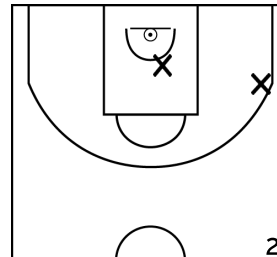
TURMEL P. - DB VAL DE REUIL (A)



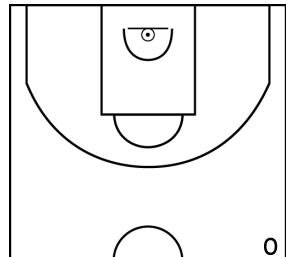
PÉRIODE 1



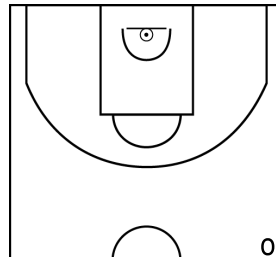
PÉRIODE 3



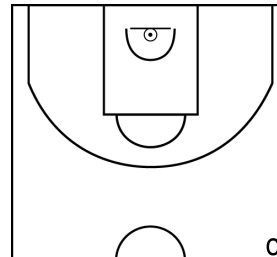
PROLONGATIONS



PÉRIODE 2



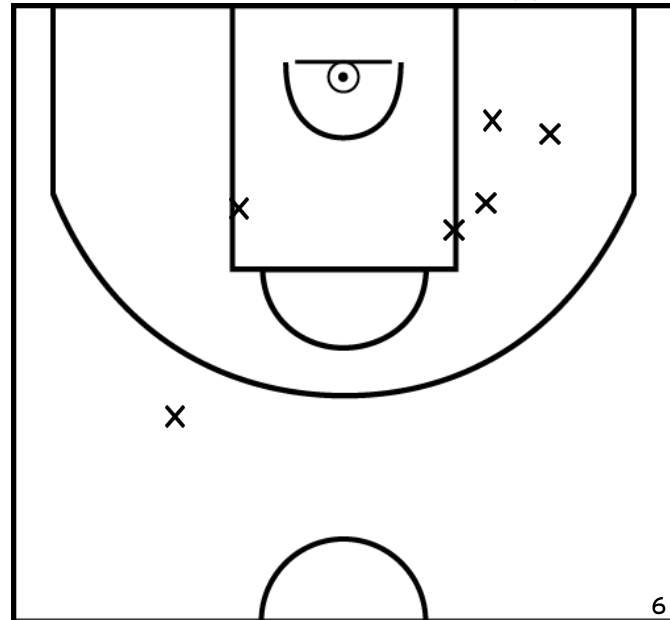
PÉRIODE 4



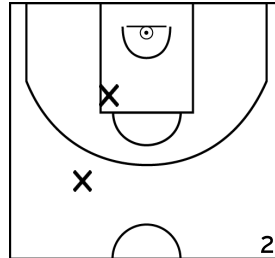
Rencontre: 5251 Date: 30/01/22 Heure: 10:30

Arbitre: BLOT K MICOUT G

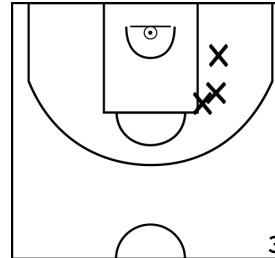
PEREIRA DE OLIVEIRA C. - DB VAL DE REUIL (A)



PÉRIODE 1



PÉRIODE 3



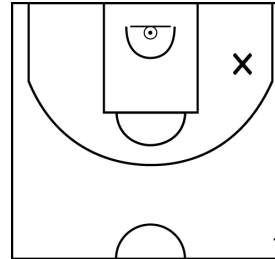
PROLONGATIONS



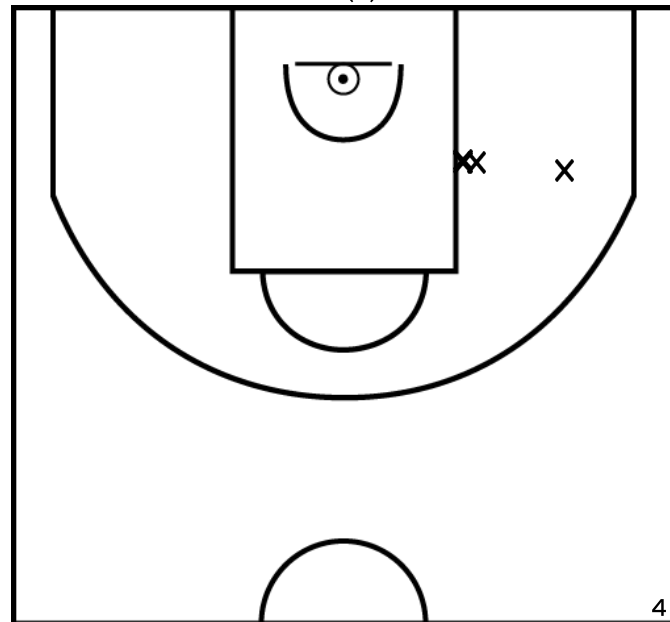
PÉRIODE 2



PÉRIODE 4



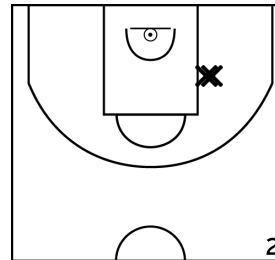
SESSOU J. - DB VAL DE REUIL (A)



PÉRIODE 1



PÉRIODE 3



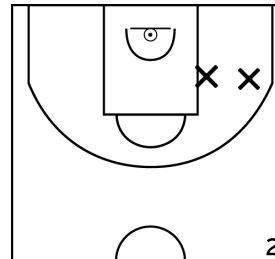
PROLONGATIONS



PÉRIODE 2



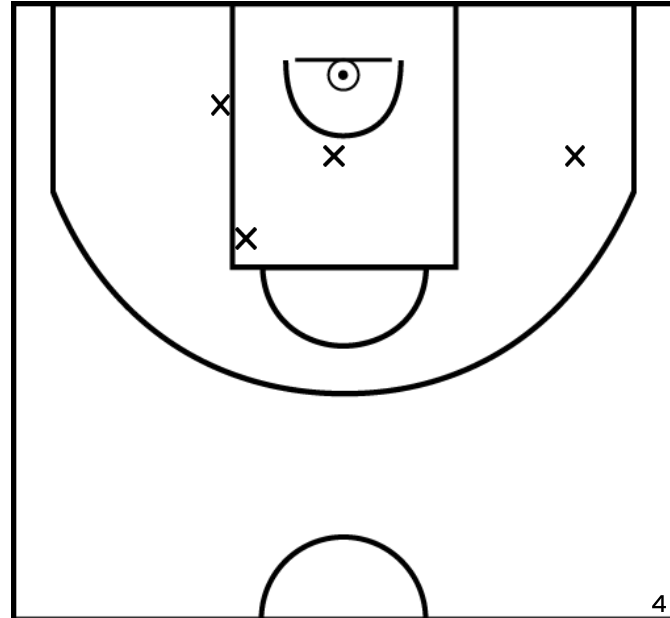
PÉRIODE 4



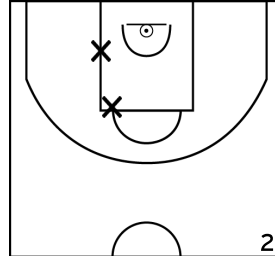
Rencontre: 5251 Date: 30/01/22 Heure: 10:30

Arbitre: BLOT K MICOUT G

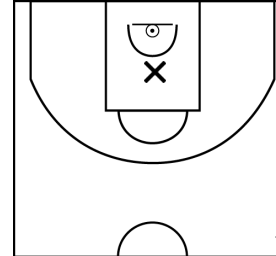
GASSA J. - DB VAL DE REUIL (A)



PÉRIODE 1



PÉRIODE 3



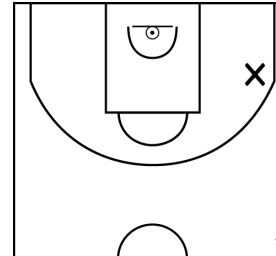
PROLONGATIONS



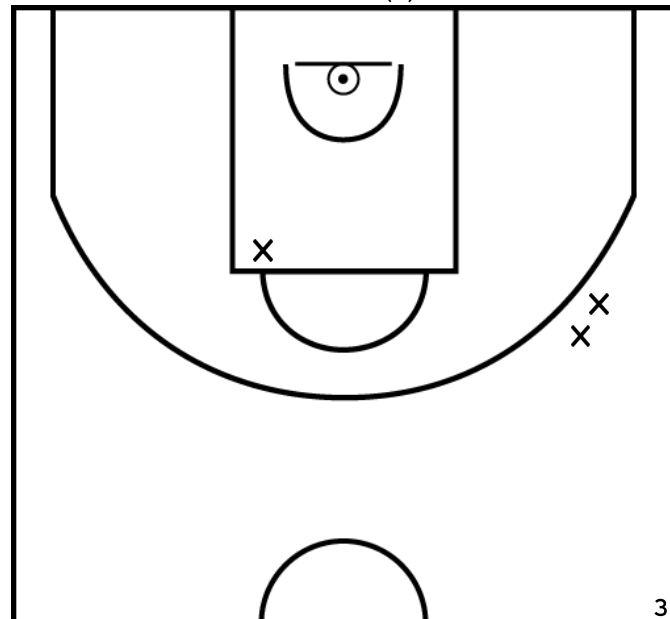
PÉRIODE 2



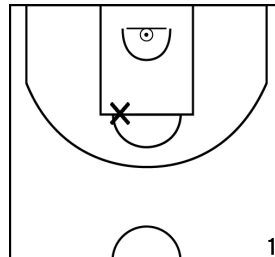
PÉRIODE 4



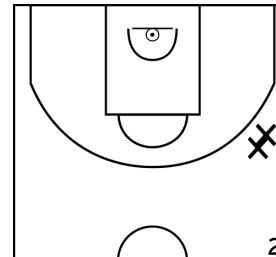
DOUCOURE M. - DB VAL DE REUIL (A)



PÉRIODE 1



PÉRIODE 3



PROLONGATIONS



PÉRIODE 2



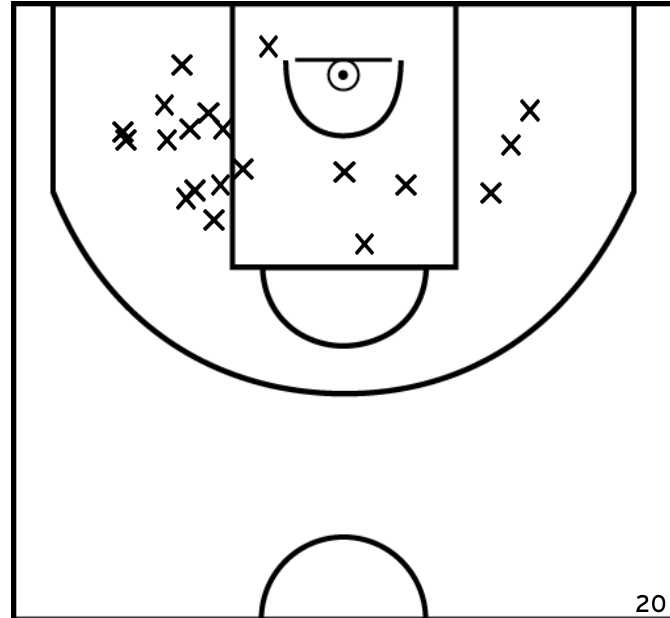
PÉRIODE 4



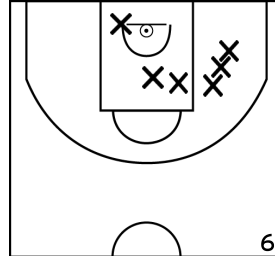
Rencontre: 5251 Date: 30/01/22 Heure: 10:30

Arbitre: BLOT K MICOUT G

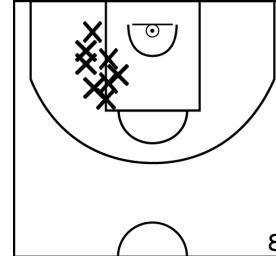
ÉQUIPE BC PONT DE L'ARCHE - 2 (B)



PÉRIODE 1



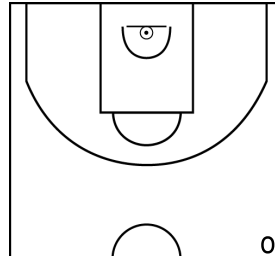
PÉRIODE 3



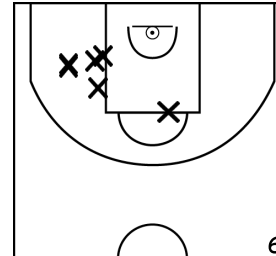
PROLONGATIONS



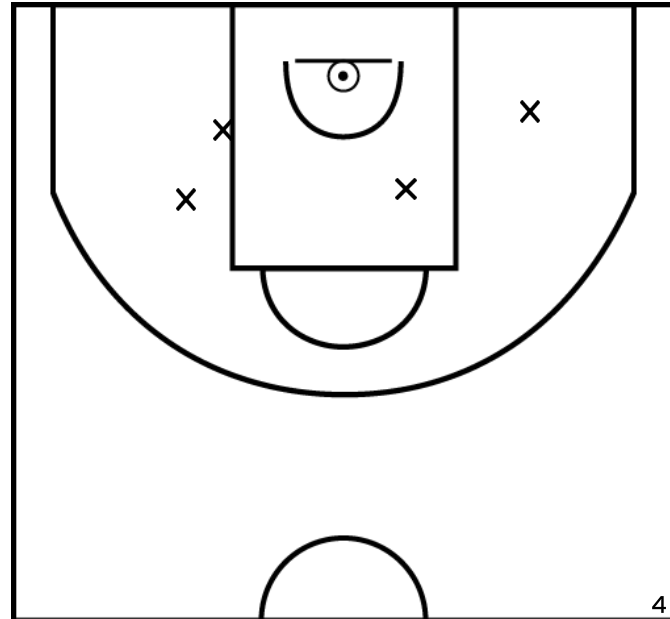
PÉRIODE 2



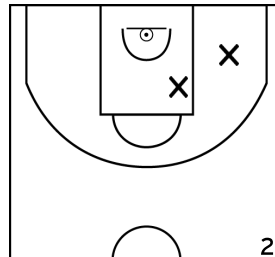
PÉRIODE 4



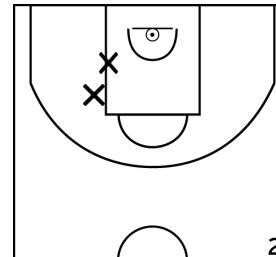
BELLANGER I. - BC PONT DE L'ARCHE - 2 (B)



PÉRIODE 1



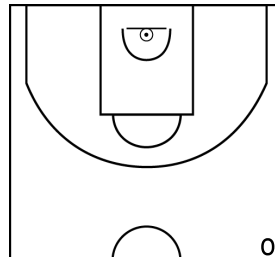
PÉRIODE 3



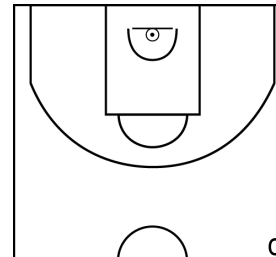
PROLONGATIONS



PÉRIODE 2



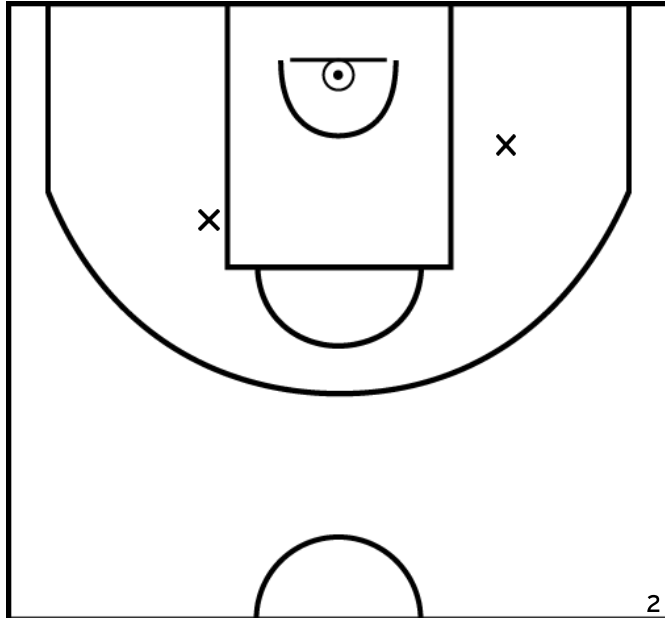
PÉRIODE 4



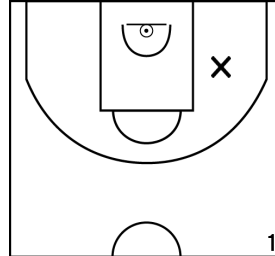
Rencontre: 5251 Date: 30/01/22 Heure: 10:30

Arbitre: BLOT K MICOUT G

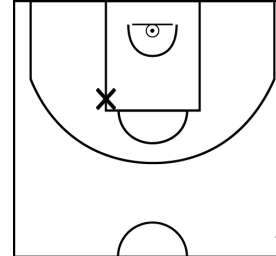
WANNYN S. - BC PONT DE L'ARCHE - 2 (B)



PÉRIODE 1



PÉRIODE 3



PROLONGATIONS



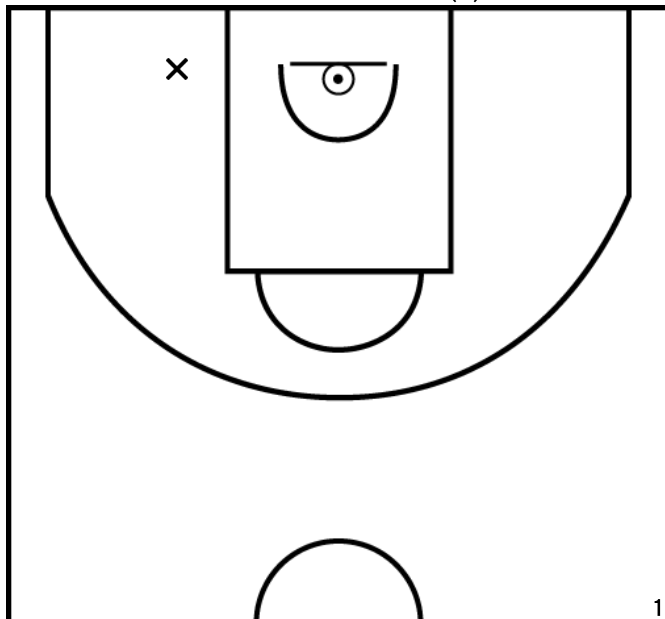
PÉRIODE 2



PÉRIODE 4



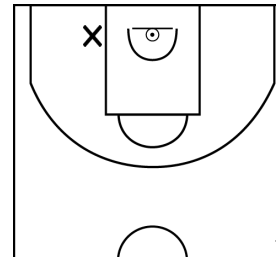
BRETAGNE N. - BC PONT DE L'ARCHE - 2 (B)



PÉRIODE 1



PÉRIODE 3



PROLONGATIONS



PÉRIODE 2



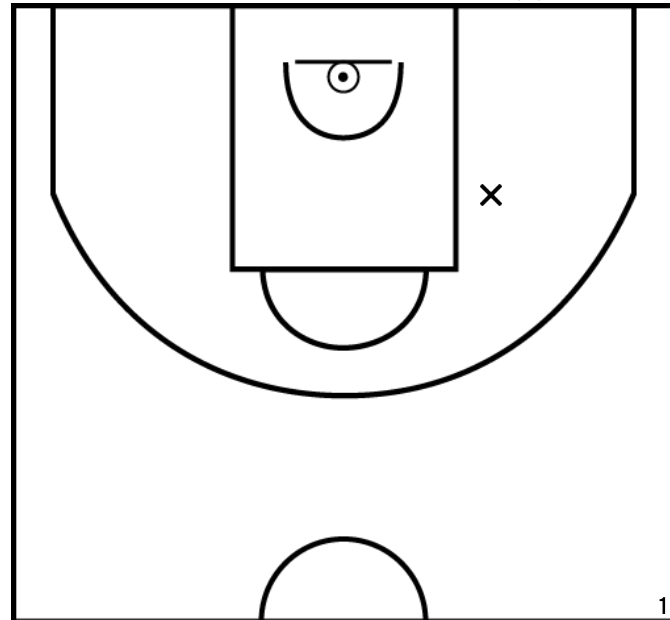
PÉRIODE 4



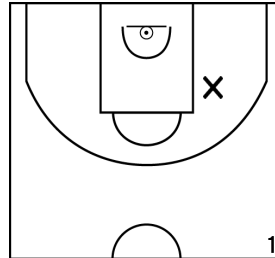
Rencontre: 5251 Date: 30/01/22 Heure: 10:30

Arbitre: BLOT K MICOUT G

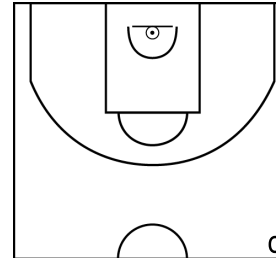
FOUGEYROLLAS S. - BC PONT DE L'ARCHE - 2 (B)



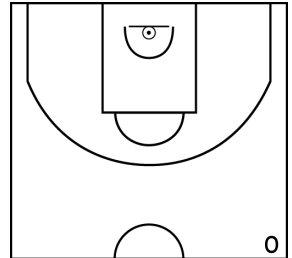
PÉRIODE 1



PÉRIODE 3



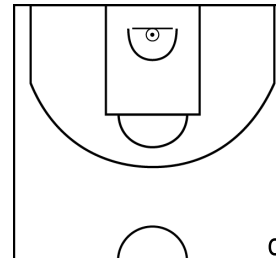
PROLONGATIONS



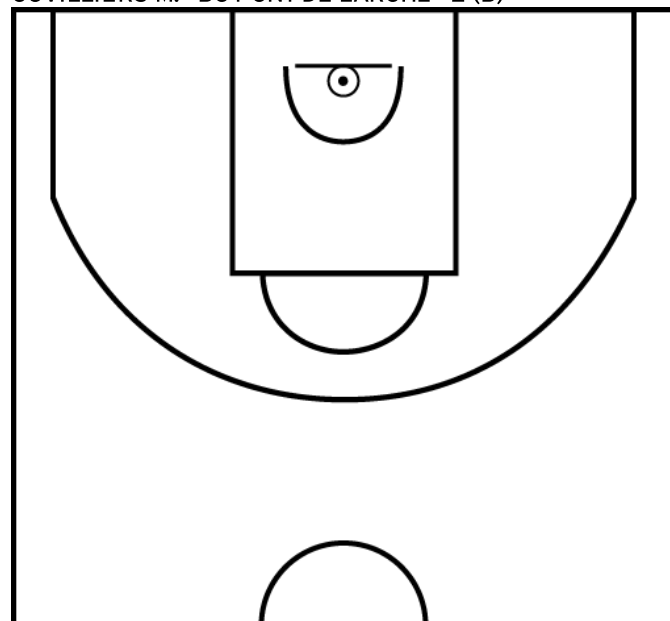
PÉRIODE 2



PÉRIODE 4



CUVILLIERS M. - BC PONT DE L'ARCHE - 2 (B)



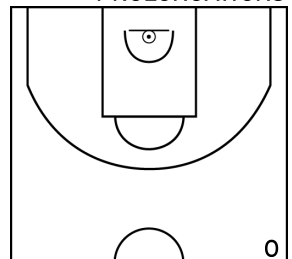
PÉRIODE 1



PÉRIODE 3



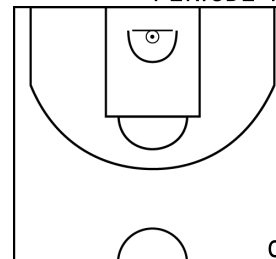
PROLONGATIONS



PÉRIODE 2



PÉRIODE 4

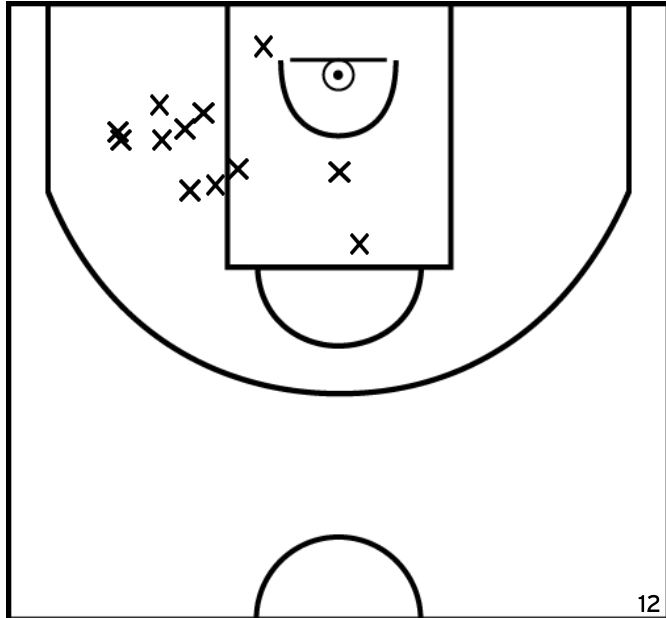




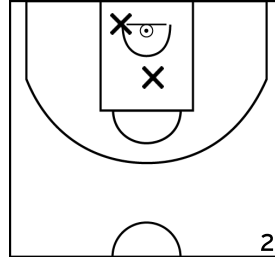
Rencontre: 5251 Date: 30/01/22 Heure: 10:30

Arbitre: BLOT K MICOUT G

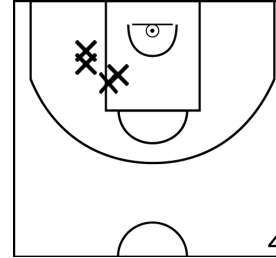
DE ZILLE M. - BC PONT DE L'ARCHE - 2 (B)



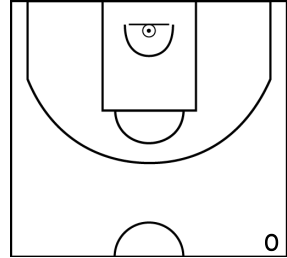
PÉRIODE 1



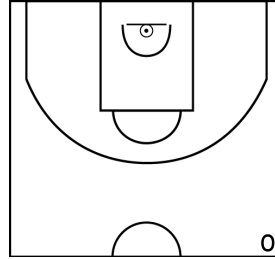
PÉRIODE 3



PROLONGATIONS



PÉRIODE 2



PÉRIODE 4

