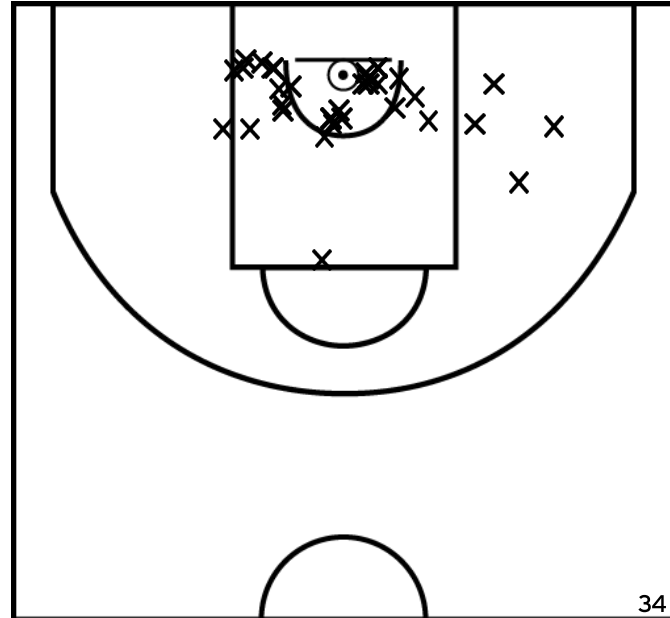


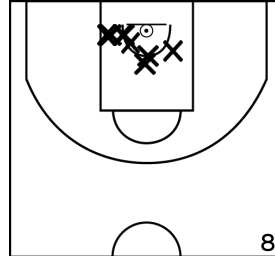
Rencontre: 5237 Date: 09/01/22 Heure: 10:30

Arbitre: TANCHOUX D KATOUDI J

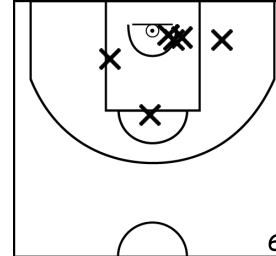
ÉQUIPE BC PONT DE L'ARCHE - 2 (A)



PÉRIODE 1



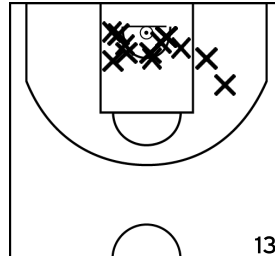
PÉRIODE 3



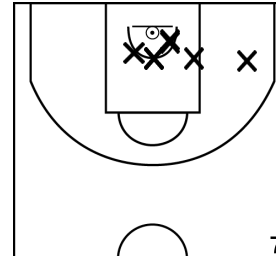
PROLONGATIONS



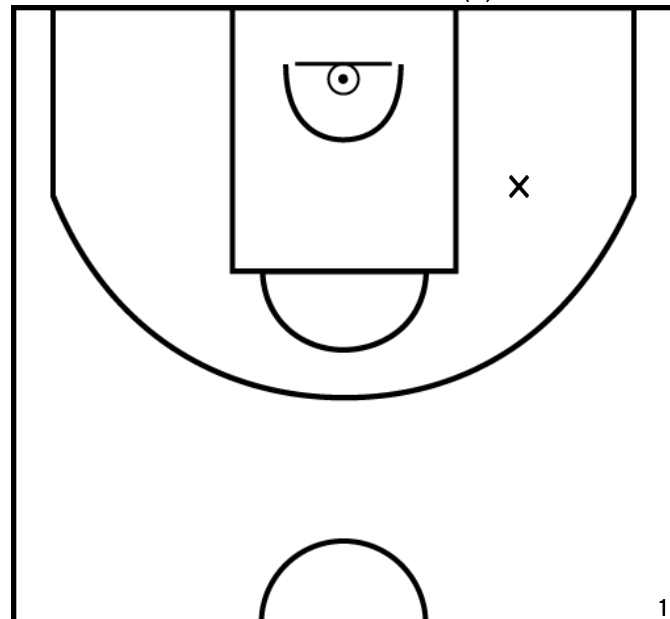
PÉRIODE 2



PÉRIODE 4



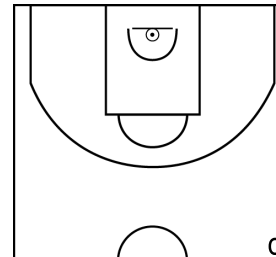
BELLANGER I. - BC PONT DE L'ARCHE - 2 (A)



PÉRIODE 1



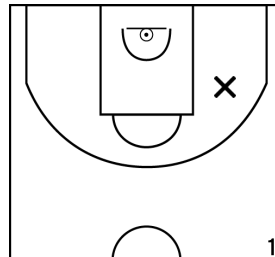
PÉRIODE 3



PROLONGATIONS



PÉRIODE 2



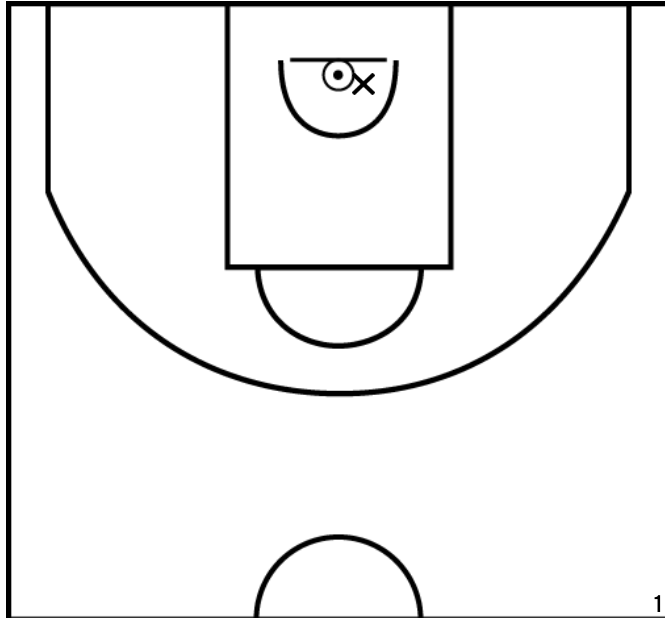
PÉRIODE 4



Rencontre: 5237 Date: 09/01/22 Heure: 10:30

Arbitre: TANCHOUX D KATOUDI J

WANNYN S. - BC PONT DE L'ARCHE - 2 (A)



PÉRIODE 1



PÉRIODE 3



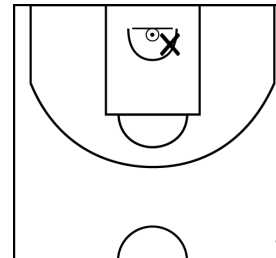
PROLONGATIONS



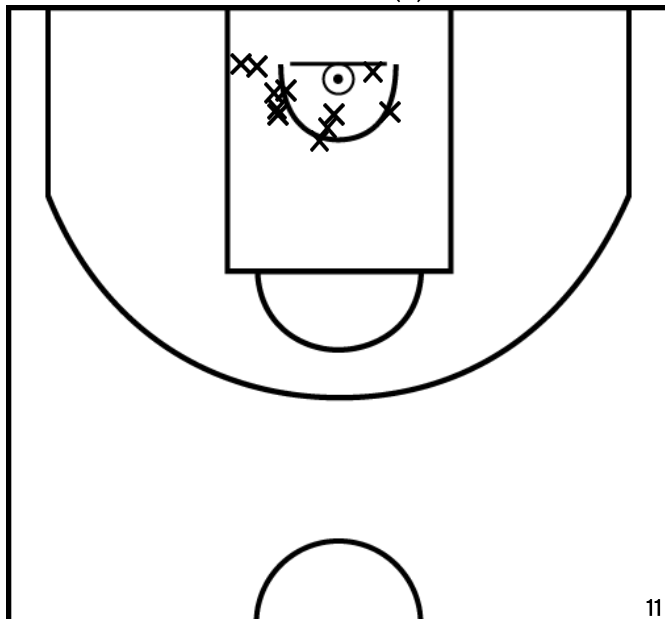
PÉRIODE 2



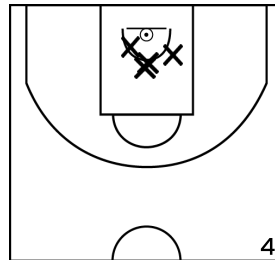
PÉRIODE 4



REMY A. - BC PONT DE L'ARCHE - 2 (A)



PÉRIODE 1



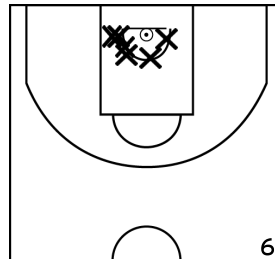
PÉRIODE 3



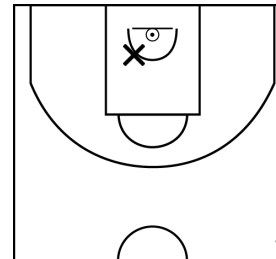
PROLONGATIONS



PÉRIODE 2



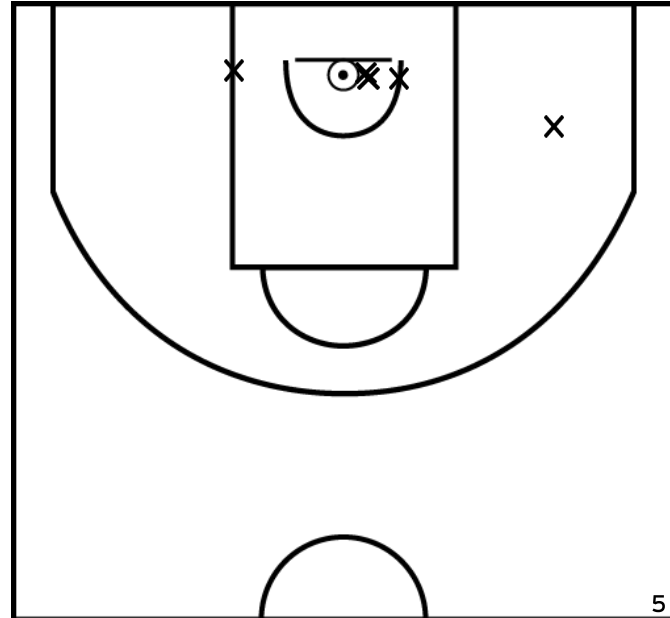
PÉRIODE 4



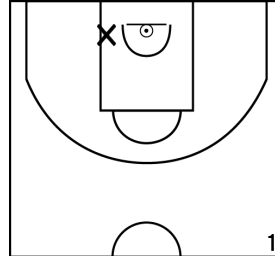
Rencontre: 5237 Date: 09/01/22 Heure: 10:30

Arbitre: TANCHOUX D KATOUDI J

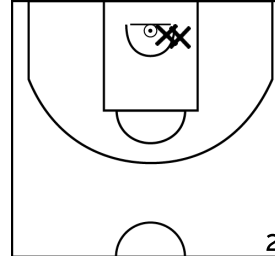
RAY L. - BC PONT DE L'ARCHE - 2 (A)



PÉRIODE 1



PÉRIODE 3



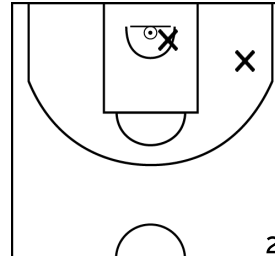
PROLONGATIONS



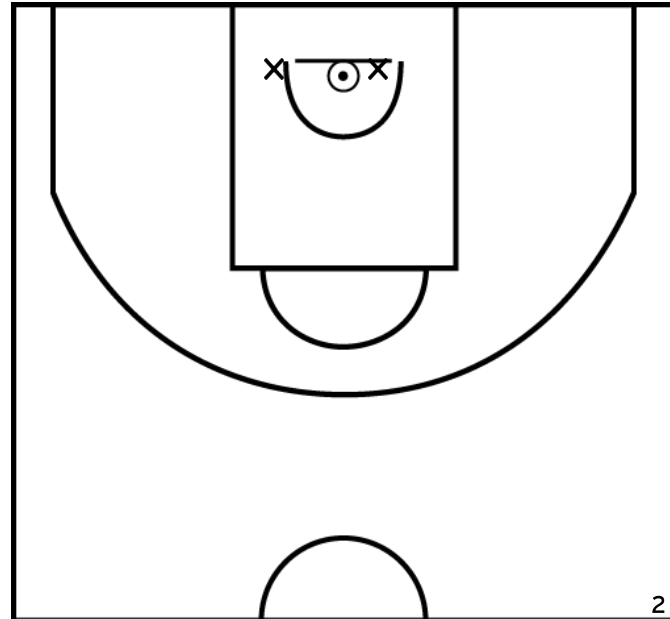
PÉRIODE 2



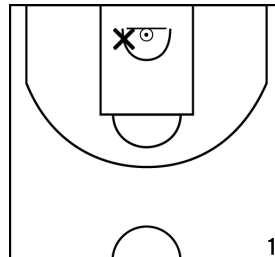
PÉRIODE 4



MENDY J. - BC PONT DE L'ARCHE - 2 (A)



PÉRIODE 1



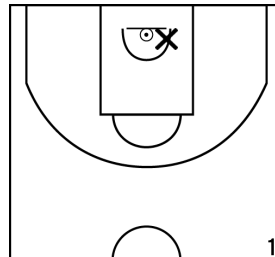
PÉRIODE 3



PROLONGATIONS



PÉRIODE 2



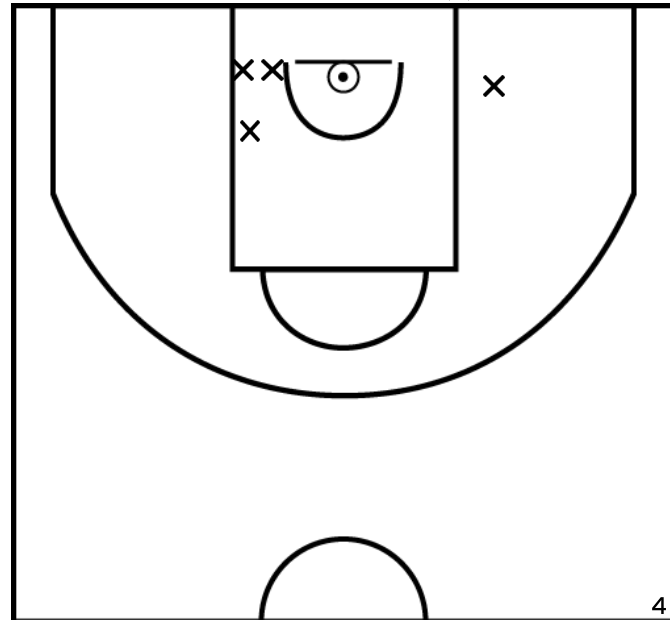
PÉRIODE 4



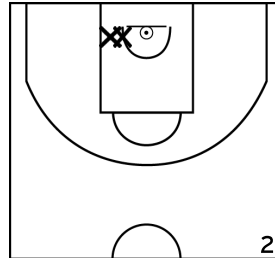
Rencontre: 5237 Date: 09/01/22 Heure: 10:30

Arbitre: TANCHOUX D KATOUDI J

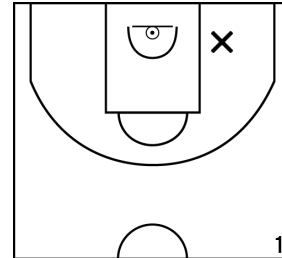
BERNARD A. - BC PONT DE L'ARCHE - 2 (A)



PÉRIODE 1



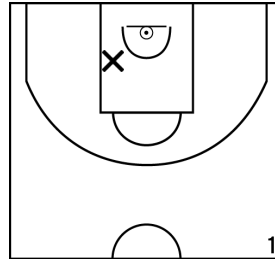
PÉRIODE 3



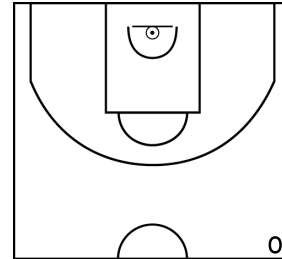
PROLONGATIONS



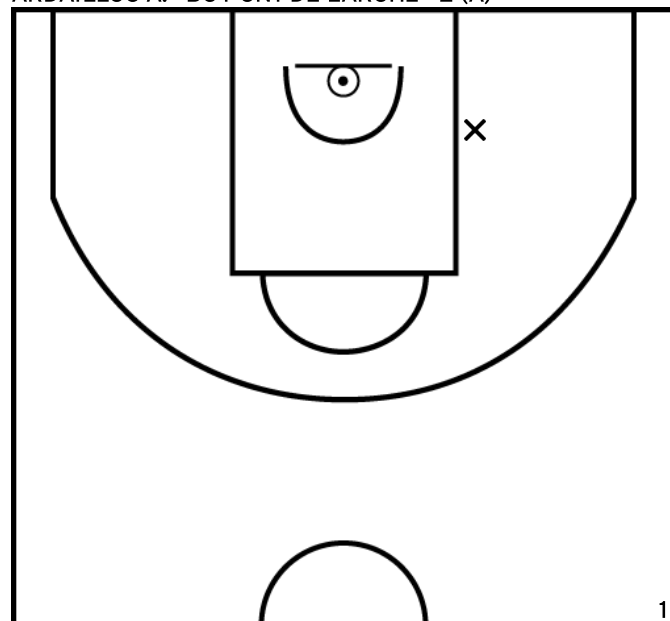
PÉRIODE 2



PÉRIODE 4



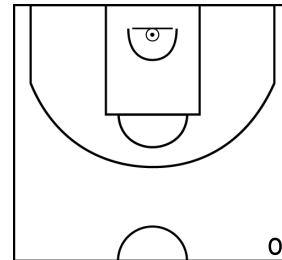
ARDAILLOU A. - BC PONT DE L'ARCHE - 2 (A)



PÉRIODE 1



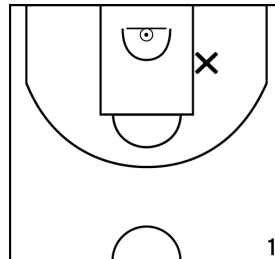
PÉRIODE 3



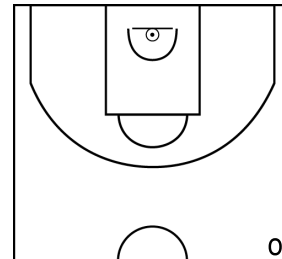
PROLONGATIONS



PÉRIODE 2



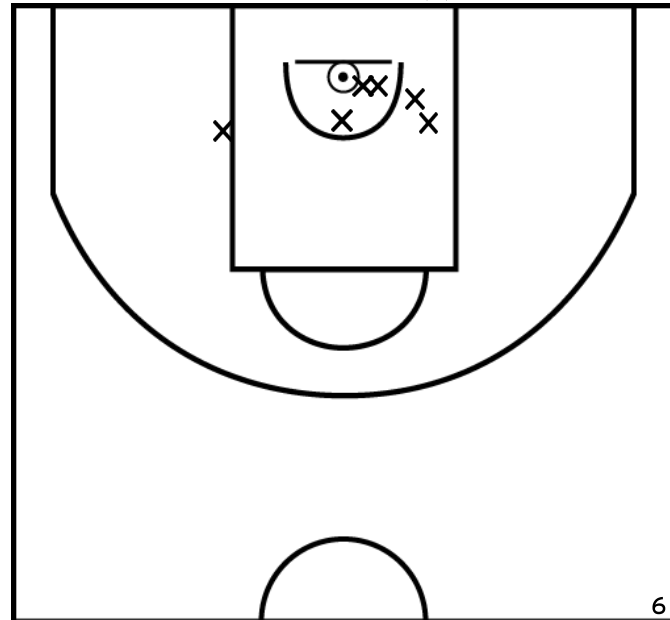
PÉRIODE 4



Rencontre: 5237 Date: 09/01/22 Heure: 10:30

Arbitre: TANCHOUX D KATOUDI J

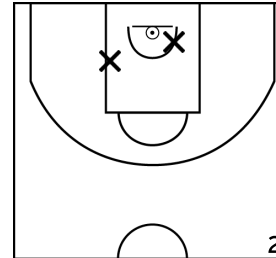
SALLES E. - BC PONT DE L'ARCHE - 2 (A)



PÉRIODE 1



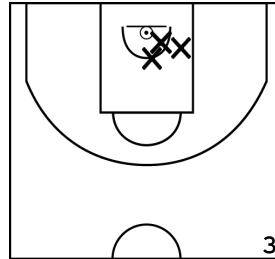
PÉRIODE 3



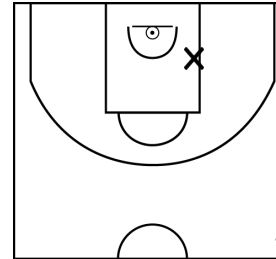
PROLONGATIONS



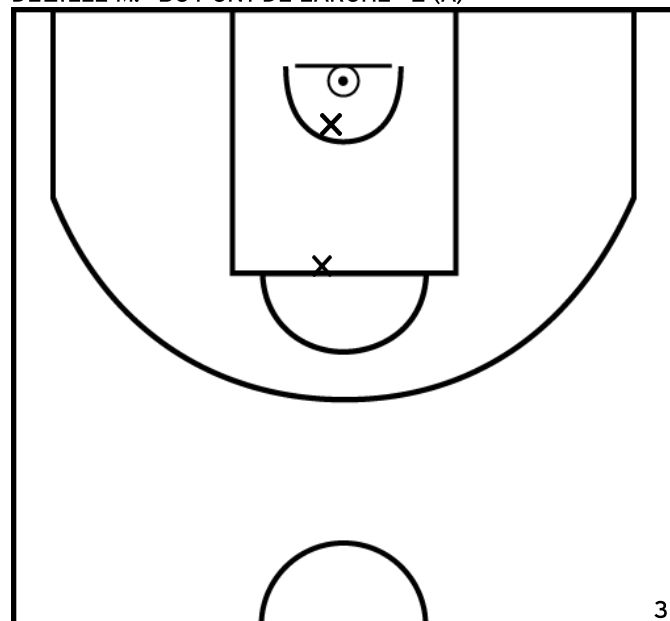
PÉRIODE 2



PÉRIODE 4



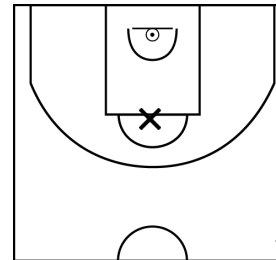
DE ZILLE M. - BC PONT DE L'ARCHE - 2 (A)



PÉRIODE 1



PÉRIODE 3



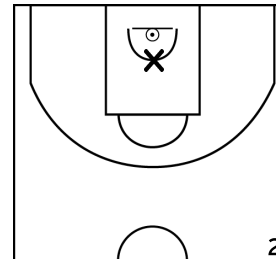
PROLONGATIONS



PÉRIODE 2



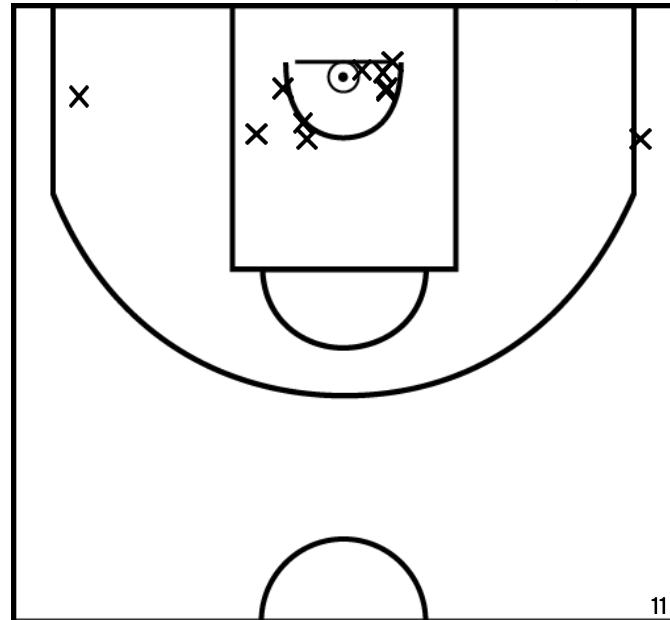
PÉRIODE 4



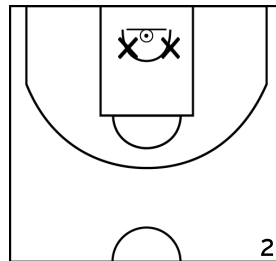
Rencontre: 5237 Date: 09/01/22 Heure: 10:30

Arbitre: TANCHOUX D KATOUDI J

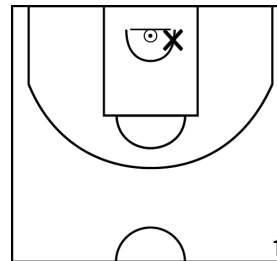
ÉQUIPE BASKET CLUB DU PAYS DE LA RISLE - 2 (B)



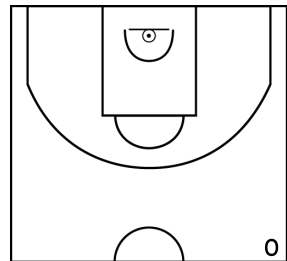
PÉRIODE 1



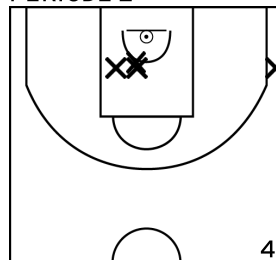
PÉRIODE 3



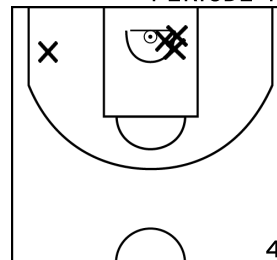
PROLONGATIONS



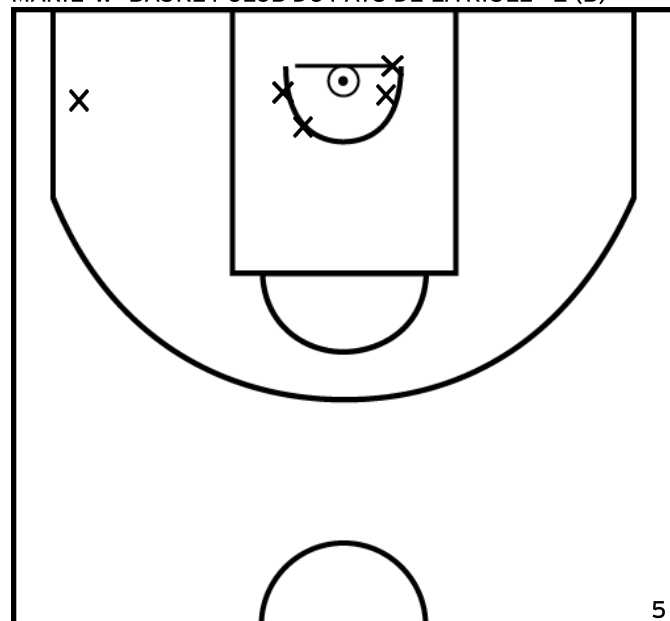
PÉRIODE 2



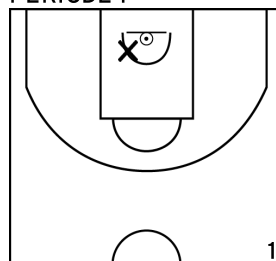
PÉRIODE 4



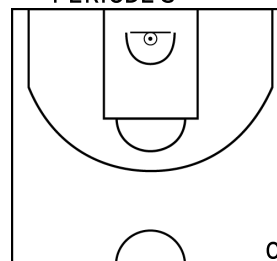
MARIE V. - BASKET CLUB DU PAYS DE LA RISLE - 2 (B)



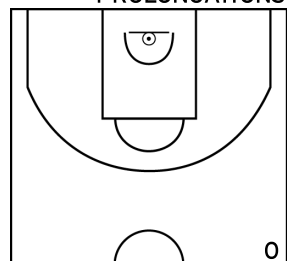
PÉRIODE 1



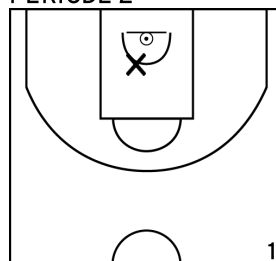
PÉRIODE 3



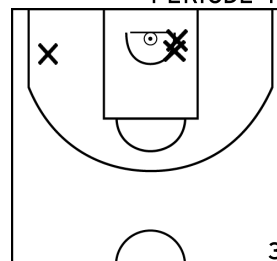
PROLONGATIONS



PÉRIODE 2



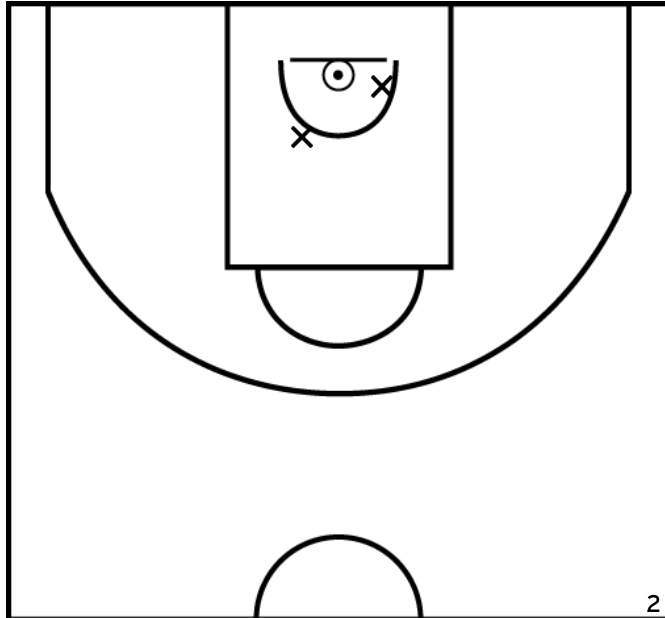
PÉRIODE 4



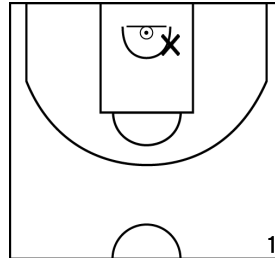
Rencontre: 5237 Date: 09/01/22 Heure: 10:30

Arbitre: TANCHOUX D KATOUDI J

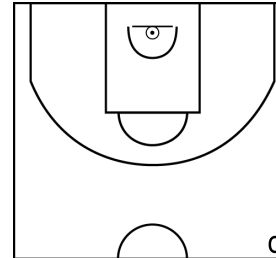
DA COSTA I. - BASKET CLUB DU PAYS DE LA RISLE - 2 (B)



PÉRIODE 1



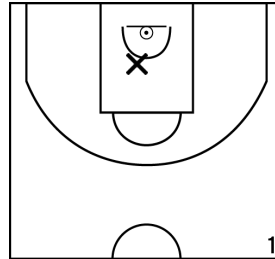
PÉRIODE 3



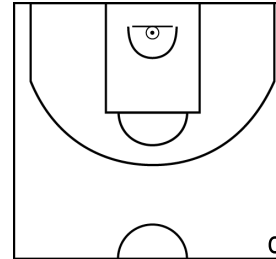
PROLONGATIONS



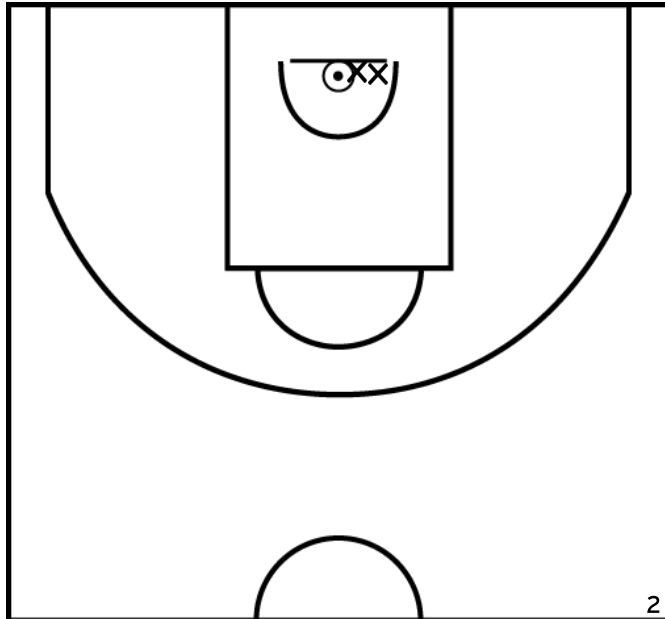
PÉRIODE 2



PÉRIODE 4



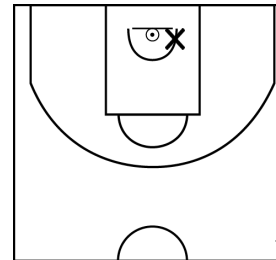
MAUDUIT A. - BASKET CLUB DU PAYS DE LA RISLE - 2 (B)



PÉRIODE 1



PÉRIODE 3



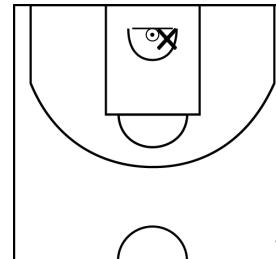
PROLONGATIONS



PÉRIODE 2



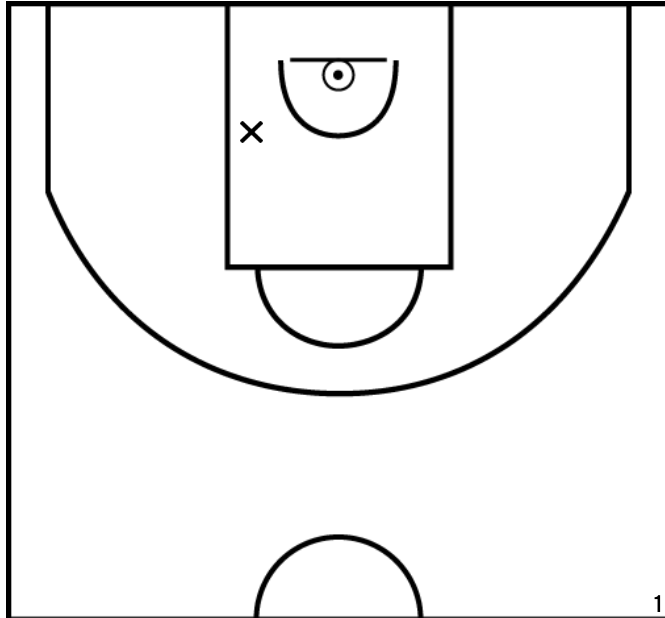
PÉRIODE 4



Rencontre: 5237 Date: 09/01/22 Heure: 10:30

Arbitre: TANCHOUX D KATOUDI J

SAVIC A. - BASKET CLUB DU PAYS DE LA RISLE - 2 (B)



PÉRIODE 1



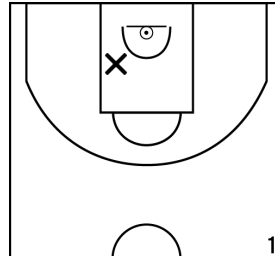
PÉRIODE 3



PROLONGATIONS



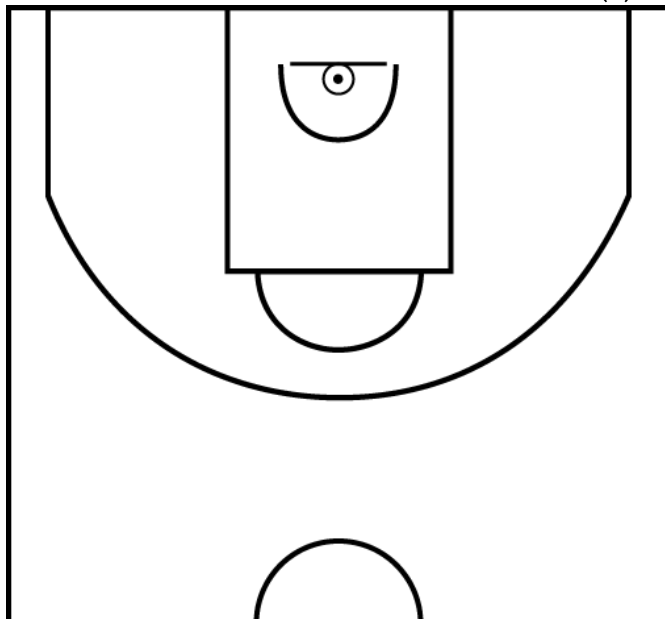
PÉRIODE 2



PÉRIODE 4



HACAULT A. - BASKET CLUB DU PAYS DE LA RISLE - 2 (B)



PÉRIODE 1



PÉRIODE 3



PROLONGATIONS



PÉRIODE 2



PÉRIODE 4

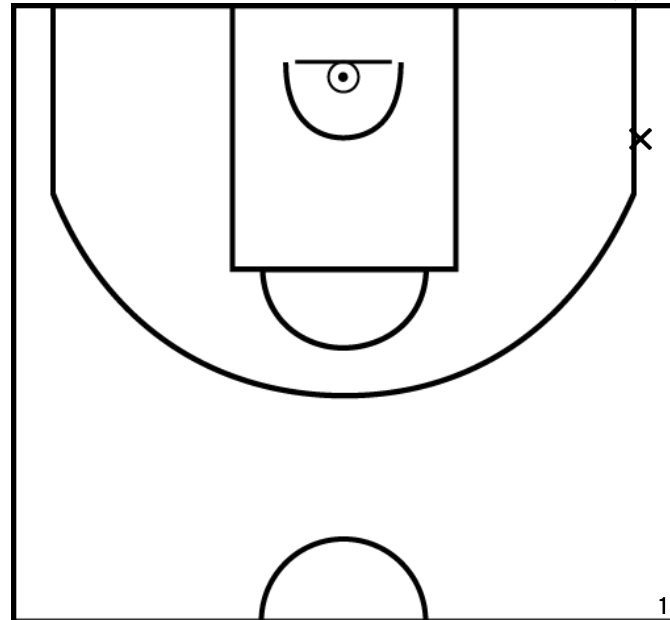




Rencontre: 5237 Date: 09/01/22 Heure: 10:30

Arbitre: TANCHOUX D KATOUDI J

PAUTREL M. - BASKET CLUB DU PAYS DE LA RISLE - 2 (B)



PÉRIODE 1



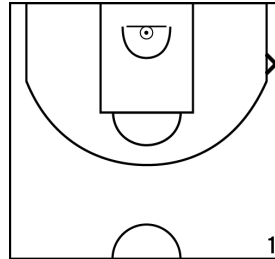
PÉRIODE 3



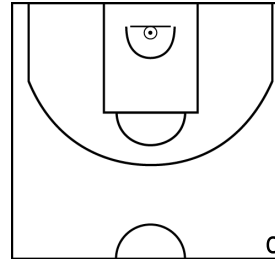
PROLONGATIONS



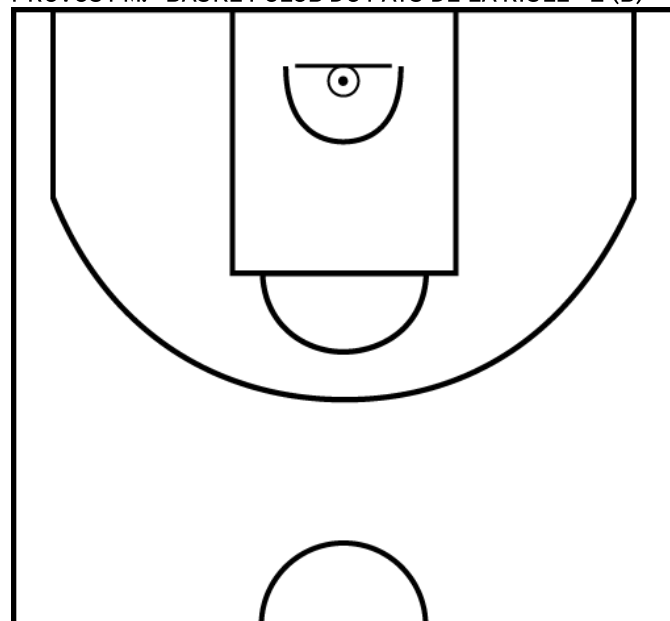
PÉRIODE 2



PÉRIODE 4



PROVOST M. - BASKET CLUB DU PAYS DE LA RISLE - 2 (B)



PÉRIODE 1



PÉRIODE 3



PROLONGATIONS



PÉRIODE 2



PÉRIODE 4

