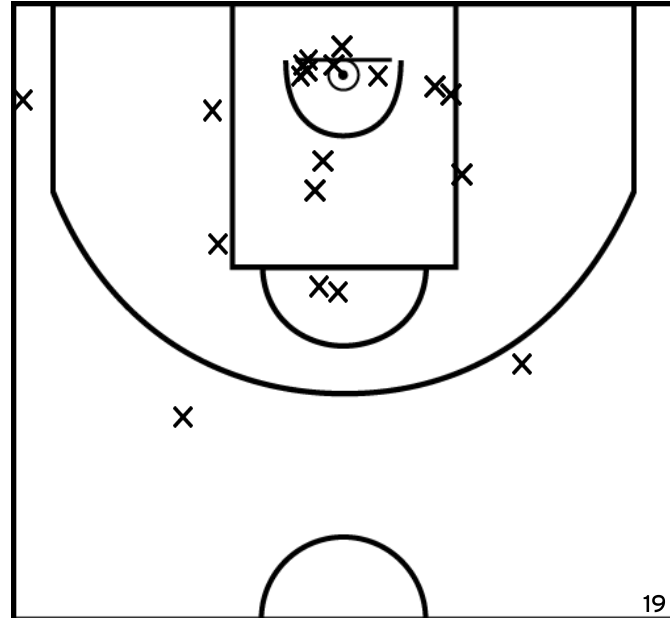


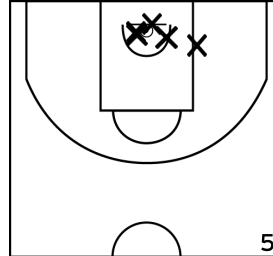
Rencontre: 1240 Date: 16/01/22 Heure: 09:00

Arbitre: MICOUT G TAOUYA B

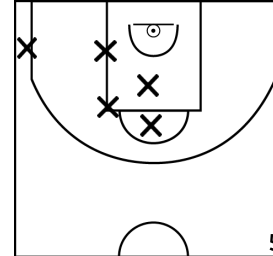
ÉQUIPE US GRAVIGNY - 2 (A)



PÉRIODE 1



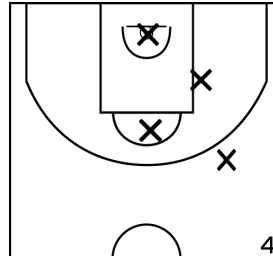
PÉRIODE 3



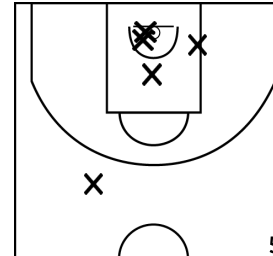
PROLONGATIONS



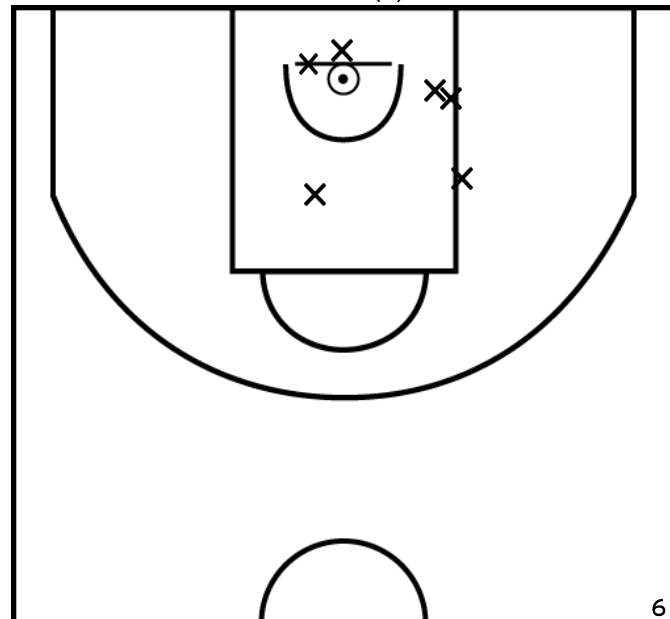
PÉRIODE 2



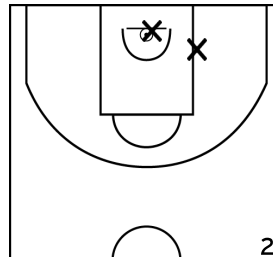
PÉRIODE 4



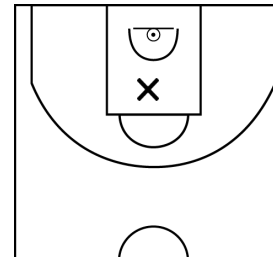
LORMELET A. - US GRAVIGNY - 2 (A)



PÉRIODE 1



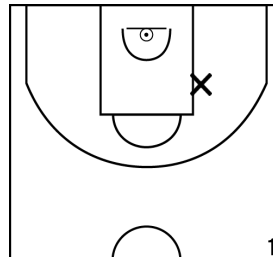
PÉRIODE 3



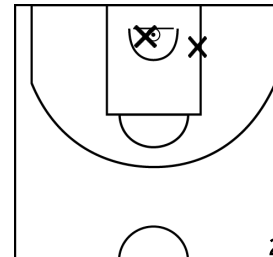
PROLONGATIONS



PÉRIODE 2



PÉRIODE 4



Rencontre: 1240 Date: 16/01/22 Heure: 09:00

Arbitre: MICOUT G TAOUYA B

GAMBOR J. - US GRAVIGNY - 2 (A)



PÉRIODE 1



PÉRIODE 3



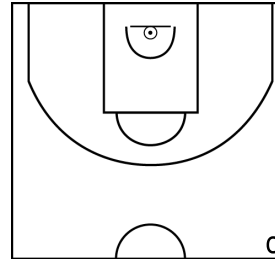
PROLONGATIONS



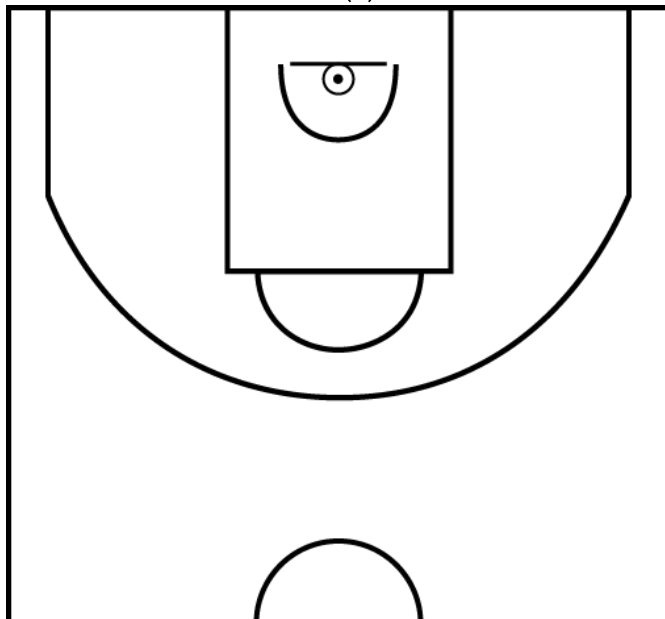
PÉRIODE 2



PÉRIODE 4



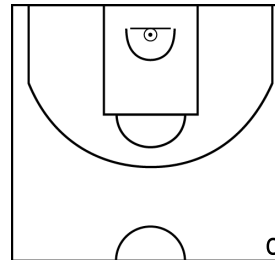
FARGUET F. - US GRAVIGNY - 2 (A)



PÉRIODE 1



PÉRIODE 3



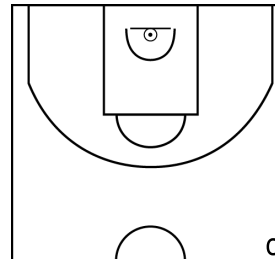
PROLONGATIONS



PÉRIODE 2



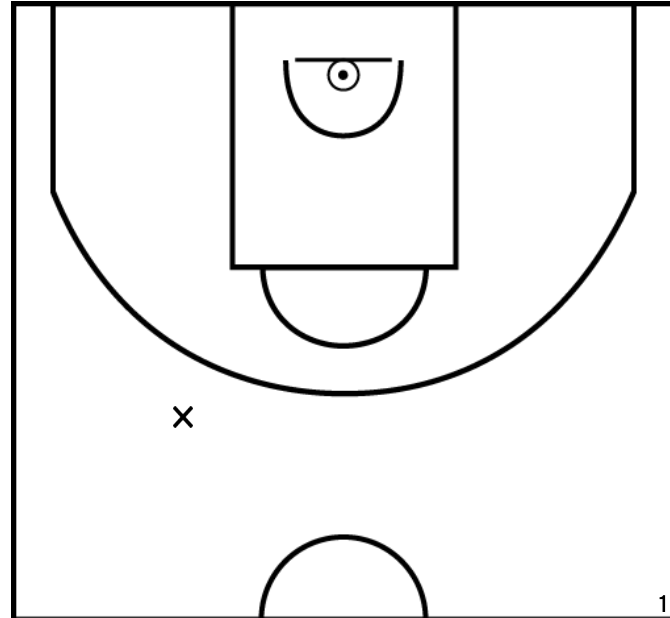
PÉRIODE 4



Rencontre: 1240 Date: 16/01/22 Heure: 09:00

Arbitre: MICOUT G TAOUYA B

RENOUF B. - US GRAVIGNY - 2 (A)



PÉRIODE 1



PÉRIODE 3



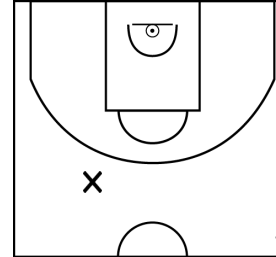
PROLONGATIONS



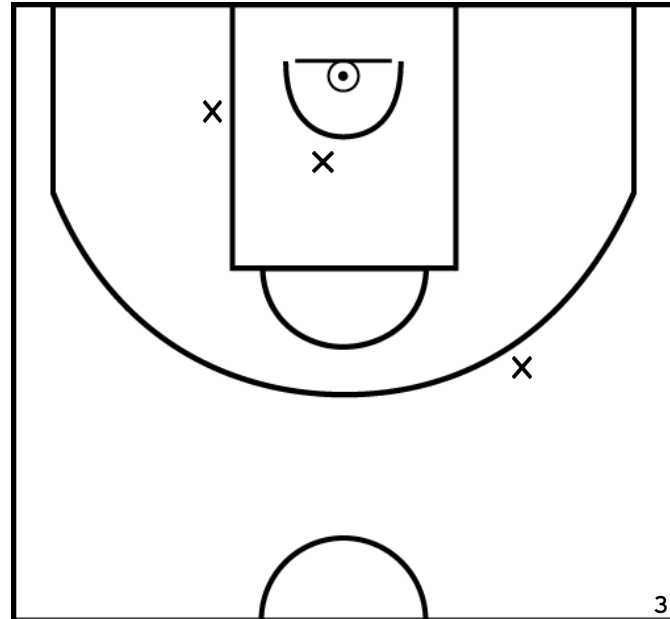
PÉRIODE 2



PÉRIODE 4



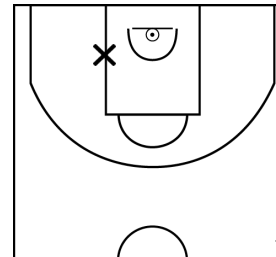
LECHALLARD L. - US GRAVIGNY - 2 (A)



PÉRIODE 1



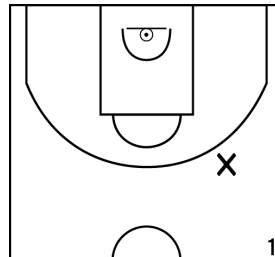
PÉRIODE 3



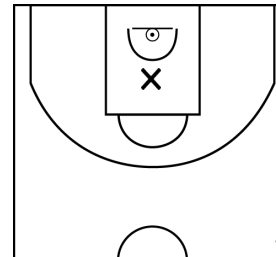
PROLONGATIONS



PÉRIODE 2



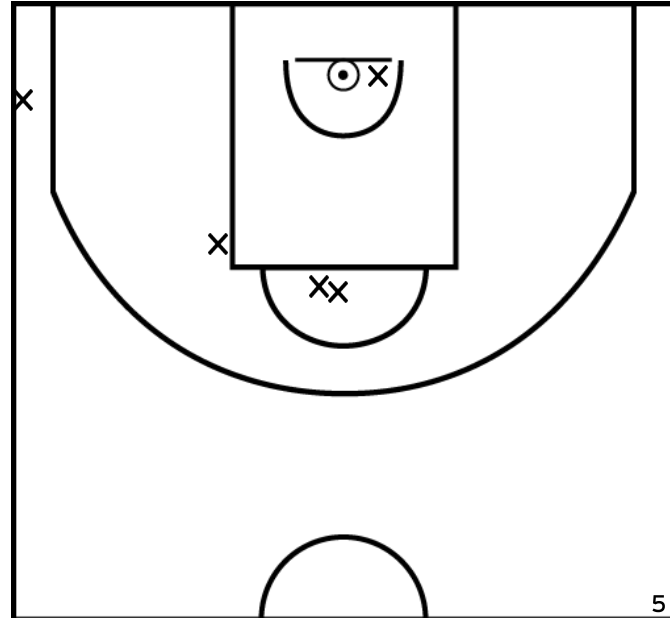
PÉRIODE 4



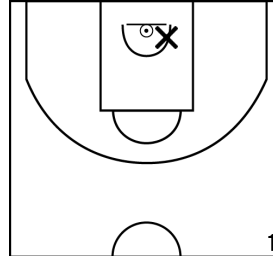
Rencontre: 1240 Date: 16/01/22 Heure: 09:00

Arbitre: MICOUT G TAOUYA B

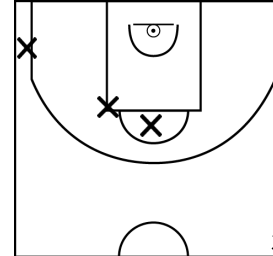
DIAS MARQUES R. - US GRAVIGNY - 2 (A)



PÉRIODE 1



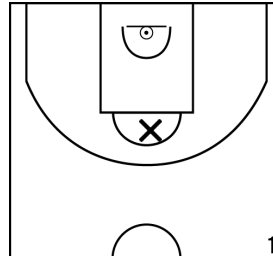
PÉRIODE 3



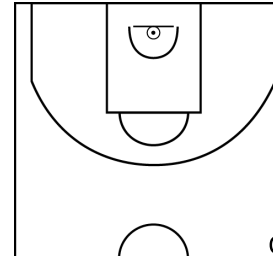
PROLONGATIONS



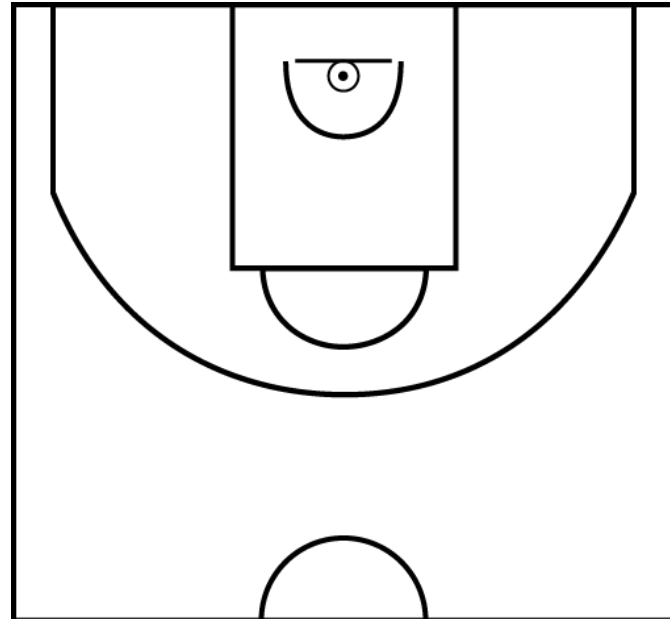
PÉRIODE 2



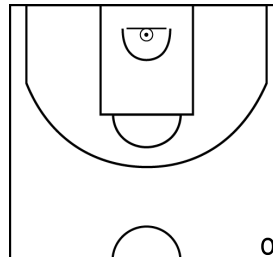
PÉRIODE 4



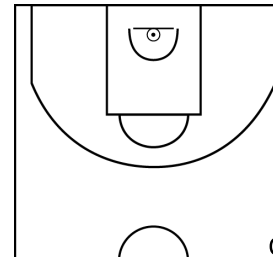
LECELLIER C. - US GRAVIGNY - 2 (A)



PÉRIODE 1



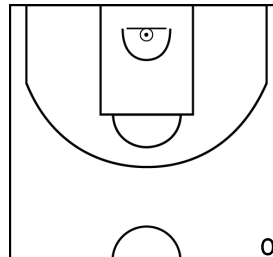
PÉRIODE 3



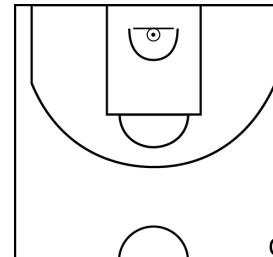
PROLONGATIONS



PÉRIODE 2



PÉRIODE 4



Rencontre: 1240 Date: 16/01/22 Heure: 09:00

Arbitre: MICOUT G TAOUYA B

MARTIN M. - US GRAVIGNY - 2 (A)



PÉRIODE 1



PÉRIODE 3



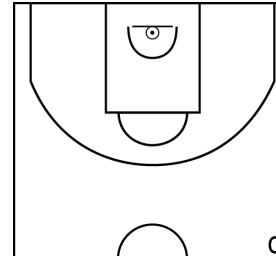
PROLONGATIONS



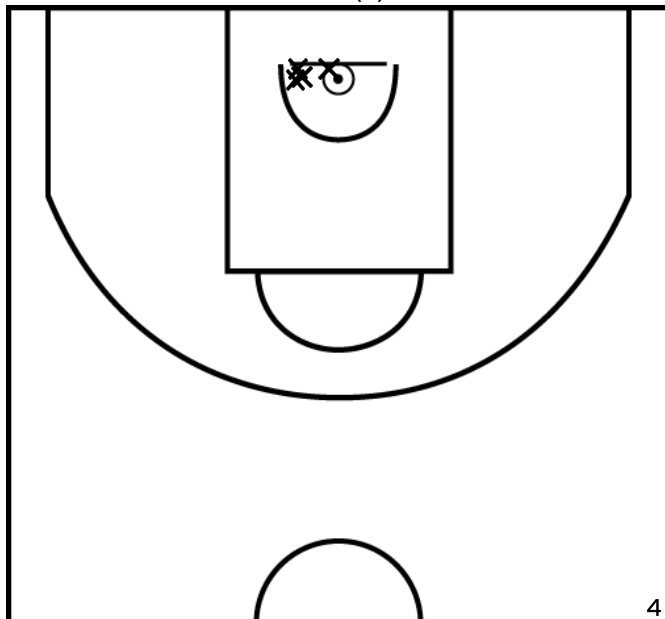
PÉRIODE 2



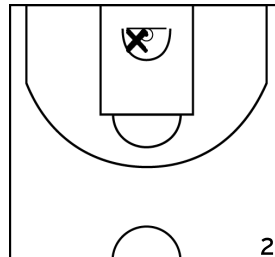
PÉRIODE 4



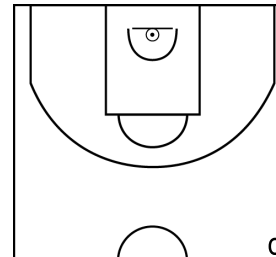
ELOUARD B. - US GRAVIGNY - 2 (A)



PÉRIODE 1



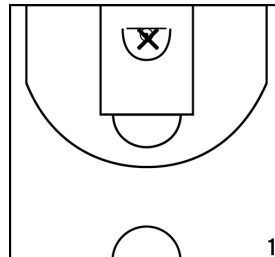
PÉRIODE 3



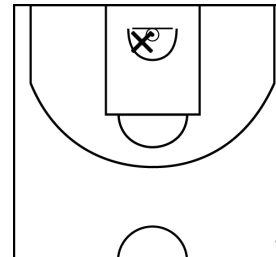
PROLONGATIONS



PÉRIODE 2



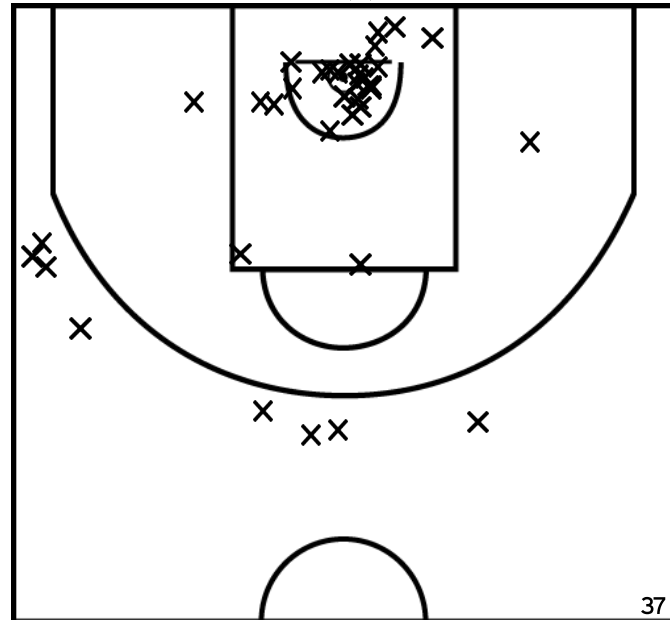
PÉRIODE 4



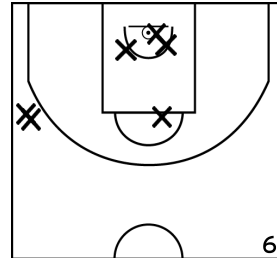
Rencontre: 1240 Date: 16/01/22 Heure: 09:00

Arbitre: MICOUT G TAOUYA B

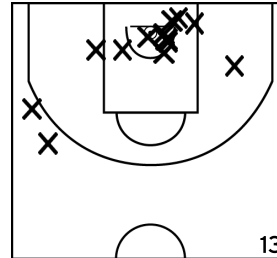
ÉQUIPE BC PONT DE L'ARCHE (B)



PÉRIODE 1



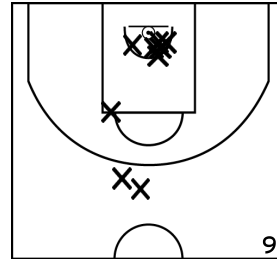
PÉRIODE 3



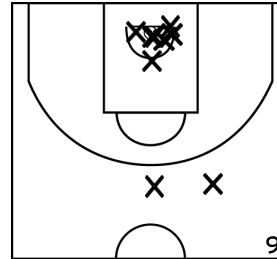
PROLONGATIONS



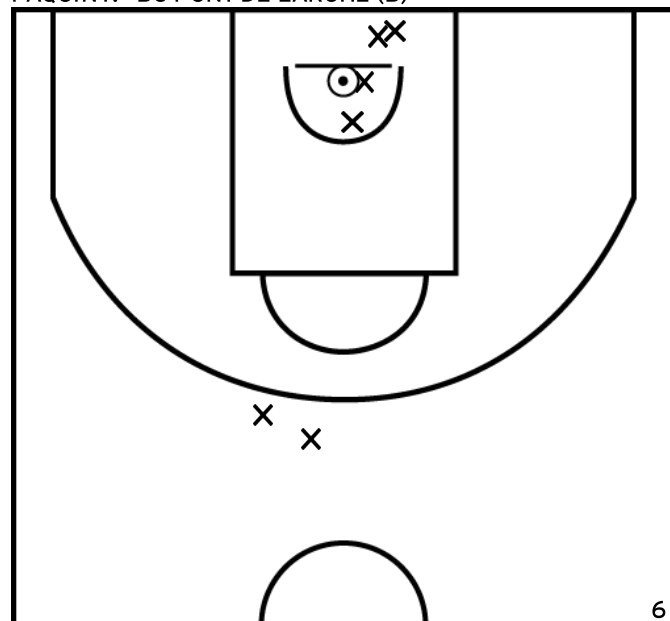
PÉRIODE 2



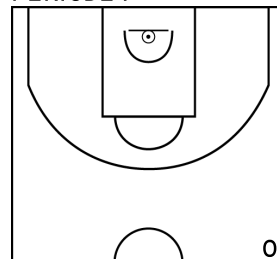
PÉRIODE 4



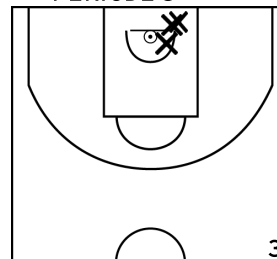
PAQUIN F. - BC PONT DE L'ARCHE (B)



PÉRIODE 1



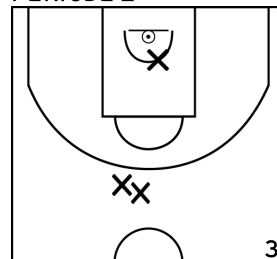
PÉRIODE 3



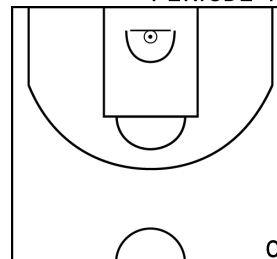
PROLONGATIONS



PÉRIODE 2



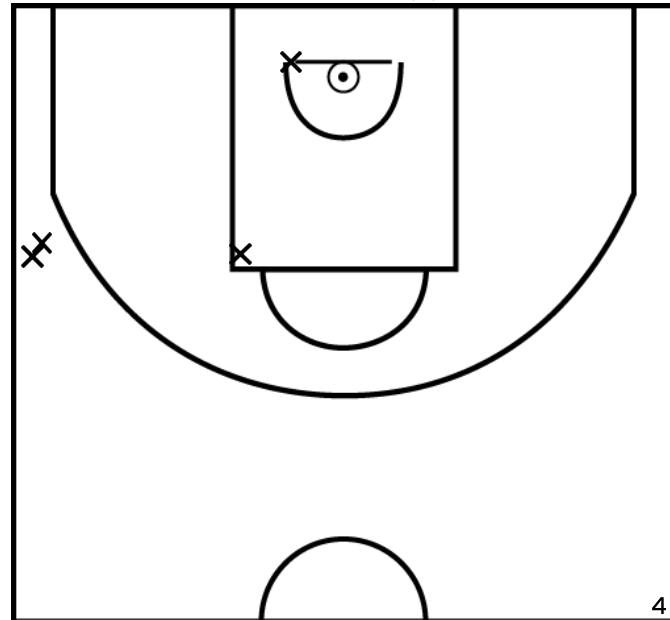
PÉRIODE 4



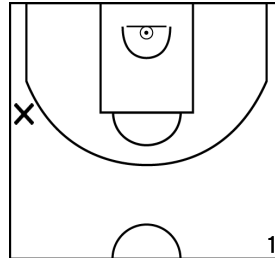
Rencontre: 1240 Date: 16/01/22 Heure: 09:00

Arbitre: MICOUT G TAOUYA B

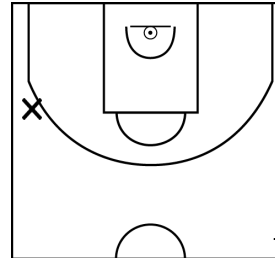
LECOMTE M. - BC PONT DE L'ARCHE (B)



PÉRIODE 1



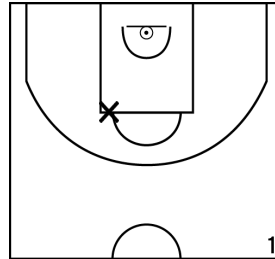
PÉRIODE 3



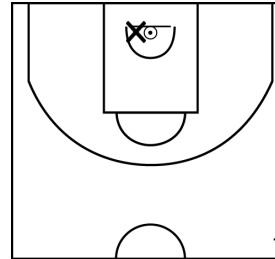
PROLONGATIONS



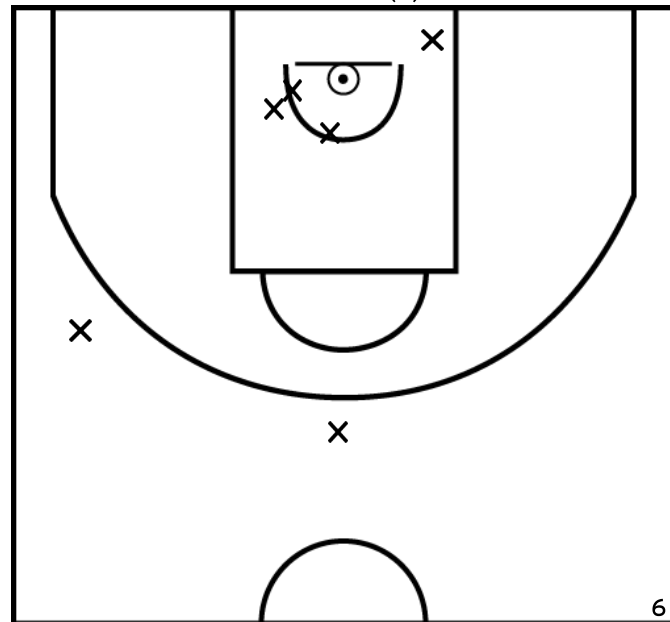
PÉRIODE 2



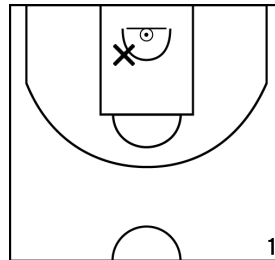
PÉRIODE 4



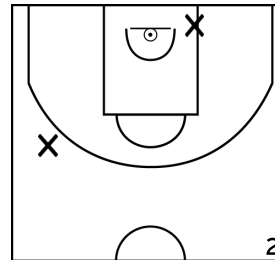
PALADE E. - BC PONT DE L'ARCHE (B)



PÉRIODE 1



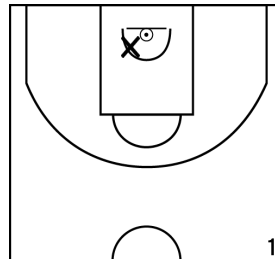
PÉRIODE 3



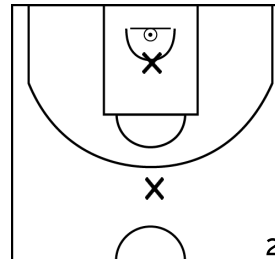
PROLONGATIONS



PÉRIODE 2



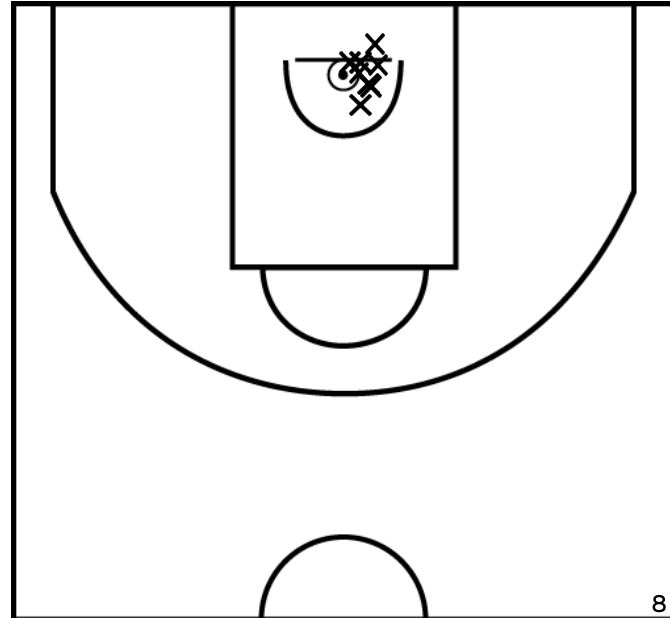
PÉRIODE 4



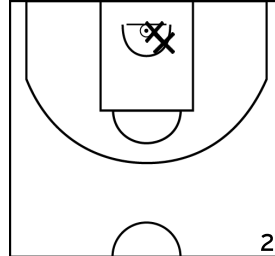
Rencontre: 1240 Date: 16/01/22 Heure: 09:00

Arbitre: MICOUT G TAOUYA B

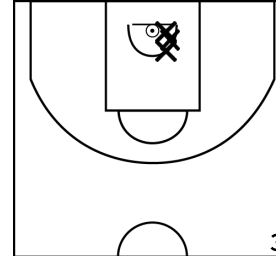
BLANCHARD M. - BC PONT DE L'ARCHE (B)



PÉRIODE 1



PÉRIODE 3



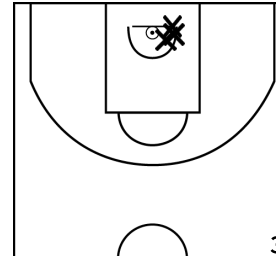
PROLONGATIONS



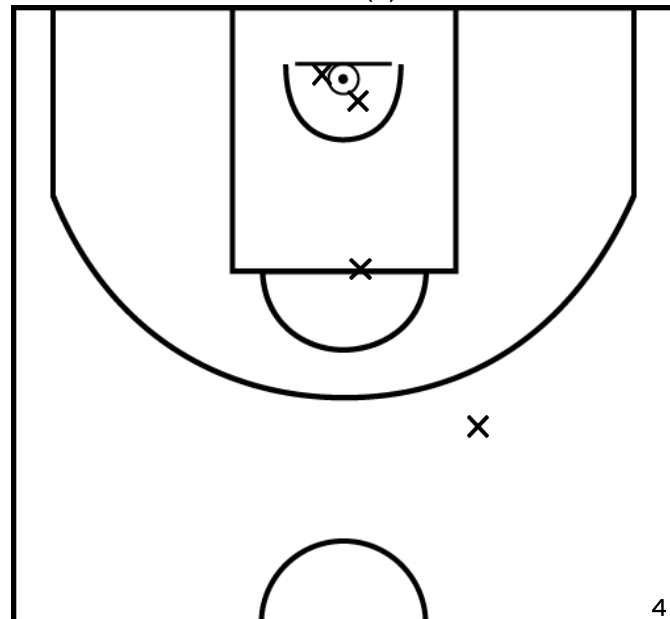
PÉRIODE 2



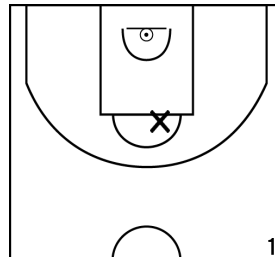
PÉRIODE 4



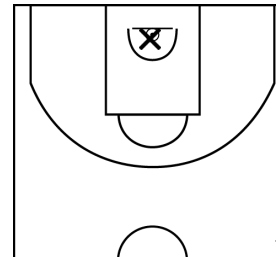
FAYOL K. - BC PONT DE L'ARCHE (B)



PÉRIODE 1



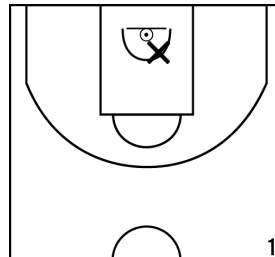
PÉRIODE 3



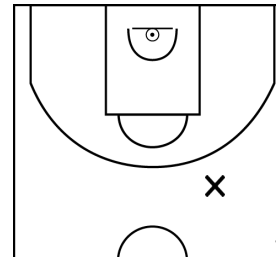
PROLONGATIONS



PÉRIODE 2



PÉRIODE 4

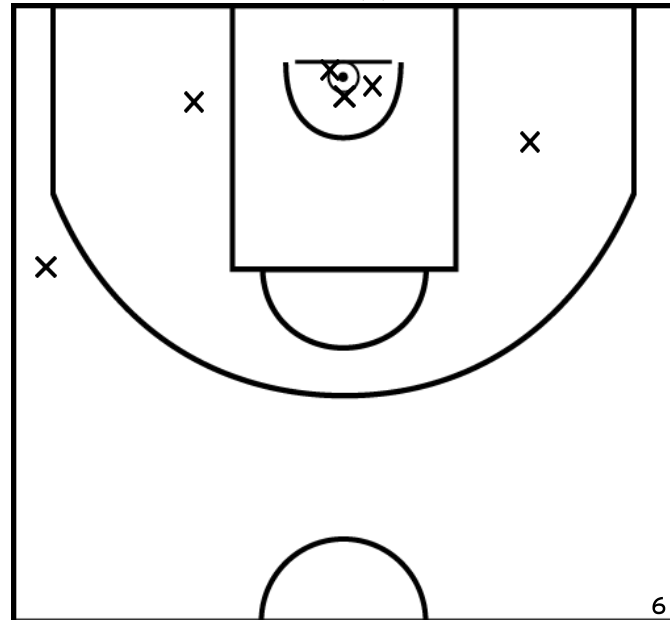




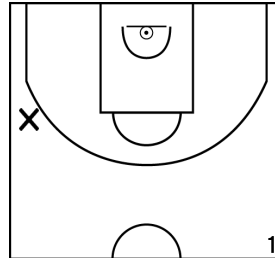
Rencontre: 1240 Date: 16/01/22 Heure: 09:00

Arbitre: MICOUT G TAOUYA B

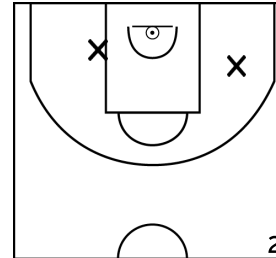
NETO C. - BC PONT DE L'ARCHE (B)



PÉRIODE 1



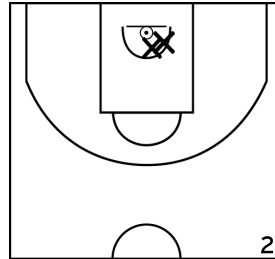
PÉRIODE 3



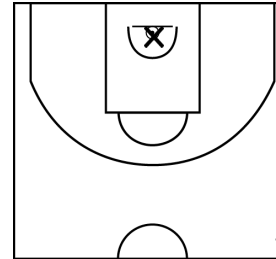
PROLONGATIONS



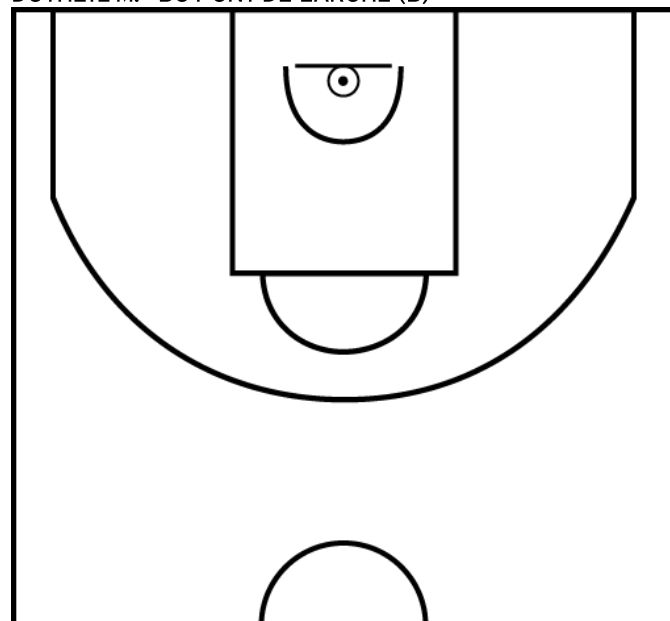
PÉRIODE 2



PÉRIODE 4



DUTHEIL M. - BC PONT DE L'ARCHE (B)



PÉRIODE 1



PÉRIODE 3



PROLONGATIONS



PÉRIODE 2



PÉRIODE 4

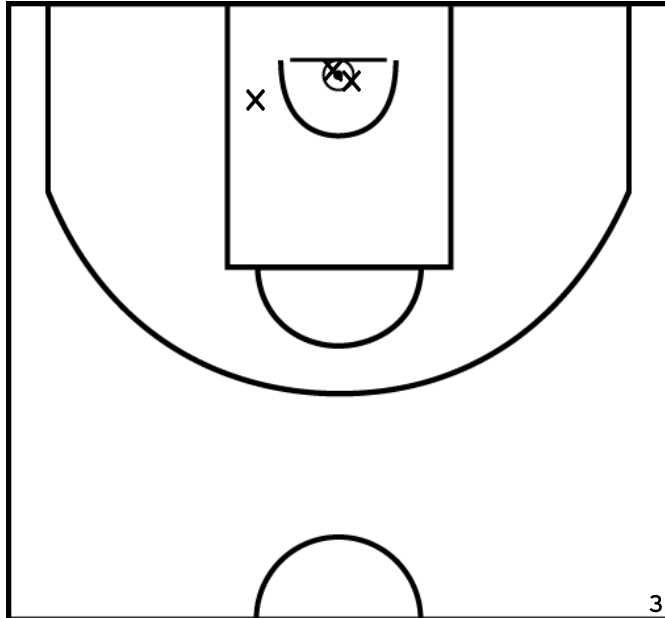


Rencontre: 1240 Date: 16/01/22 Heure: 09:00

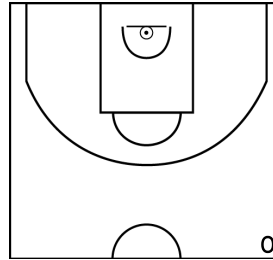
Arbitre: MICOUT G TAOUYA B

---

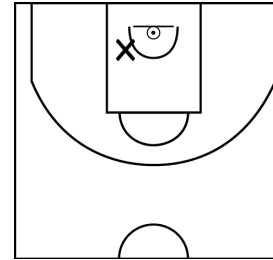
BENOIST M. - BC PONT DE L'ARCHE (B)



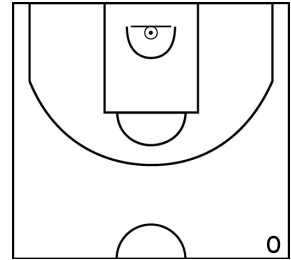
PÉRIODE 1



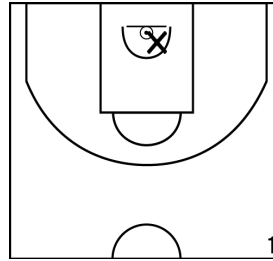
PÉRIODE 3



PROLONGATIONS



PÉRIODE 2



PÉRIODE 4

