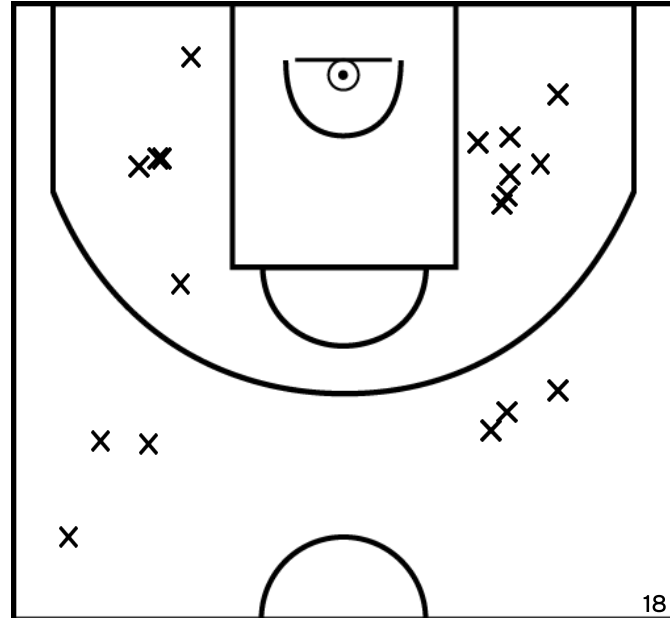


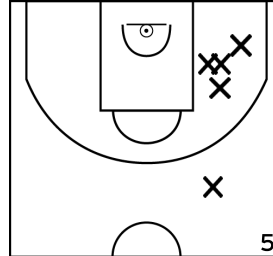
Rencontre: 1111 Date: 02/04/23 Heure: 10:00

Arbitre: JANIAC E DUHAMEL P

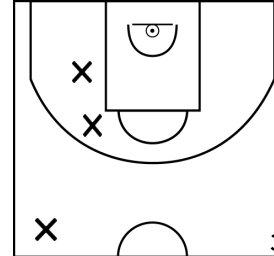
ÉQUIPE BC PERRIERS / ANDELLE (A)



PÉRIODE 1



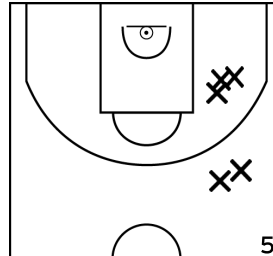
PÉRIODE 3



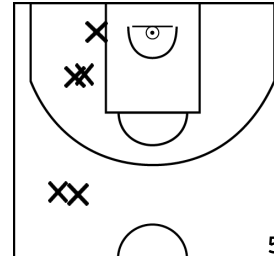
PROLONGATIONS



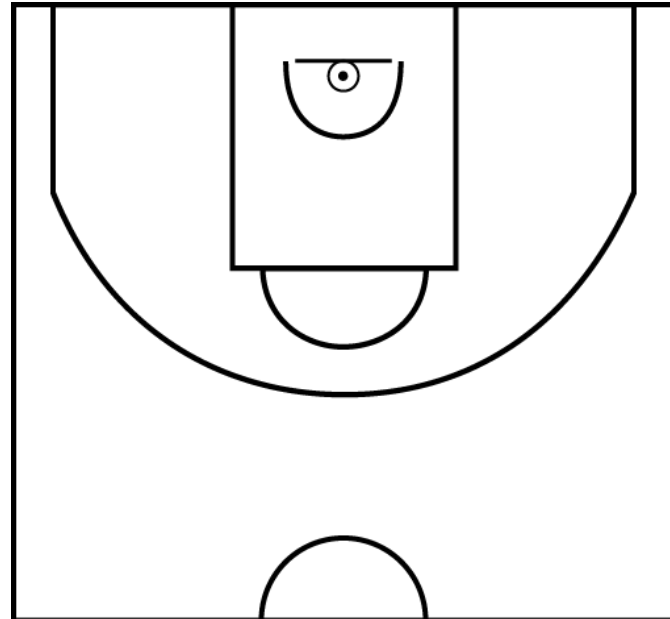
PÉRIODE 2



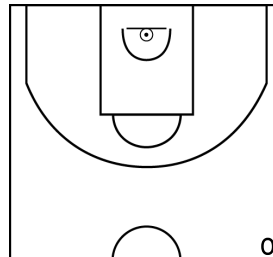
PÉRIODE 4



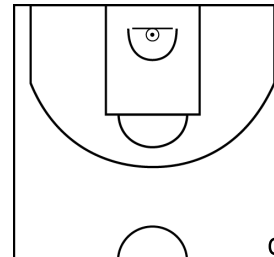
NDIAYE I. - BC PERRIERS / ANDELLE (A)



PÉRIODE 1



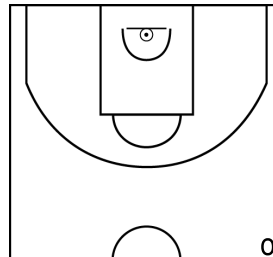
PÉRIODE 3



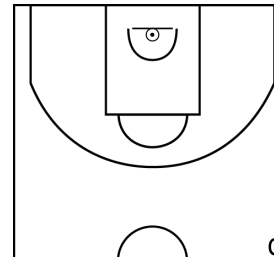
PROLONGATIONS



PÉRIODE 2



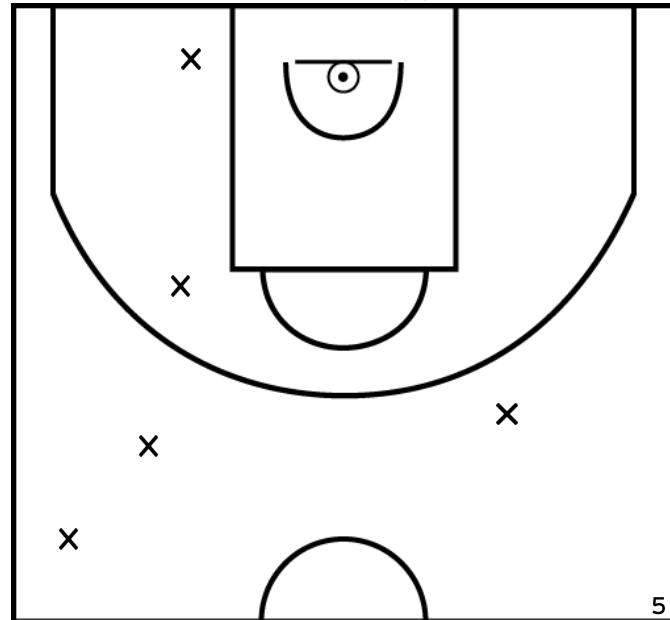
PÉRIODE 4



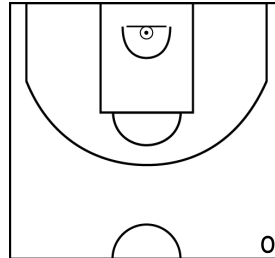
Rencontre: 1111 Date: 02/04/23 Heure: 10:00

Arbitre: JANIAC E DUHAMEL P

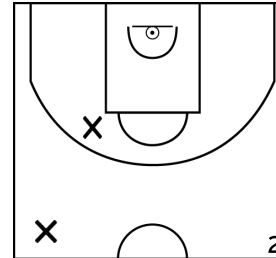
SLITI F. - BC PERRIERS / ANDELLE (A)



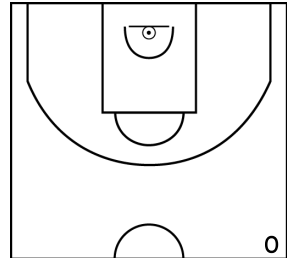
PÉRIODE 1



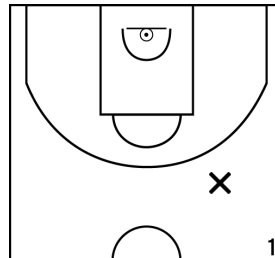
PÉRIODE 3



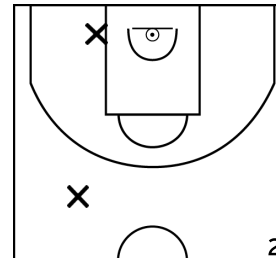
PROLONGATIONS



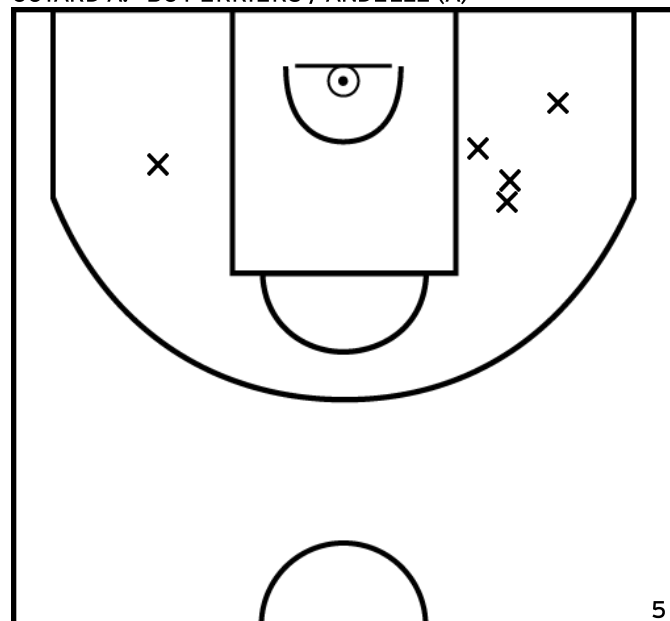
PÉRIODE 2



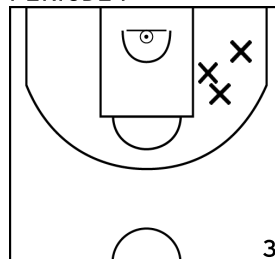
PÉRIODE 4



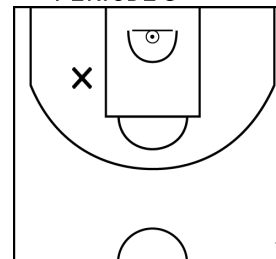
COTARD A. - BC PERRIERS / ANDELLE (A)



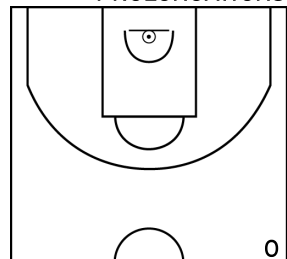
PÉRIODE 1



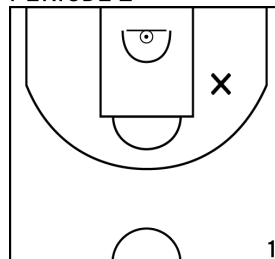
PÉRIODE 3



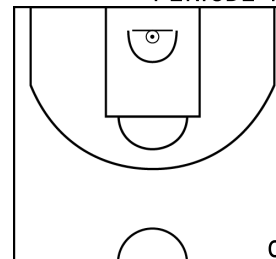
PROLONGATIONS



PÉRIODE 2



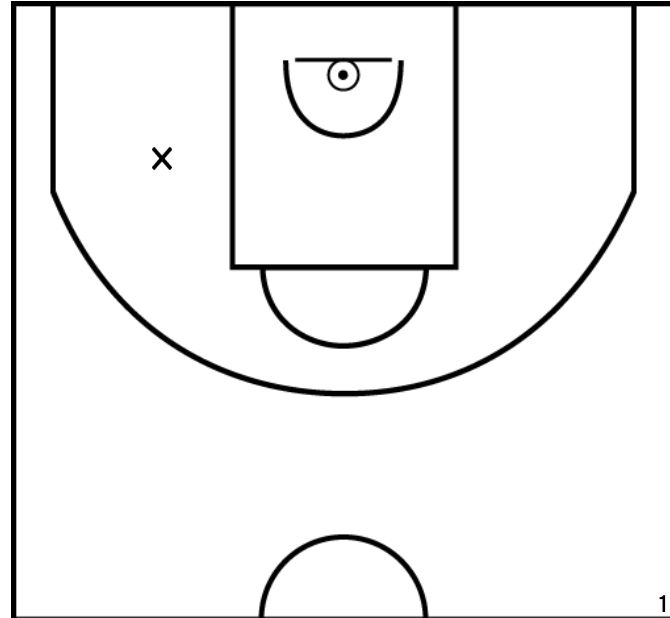
PÉRIODE 4



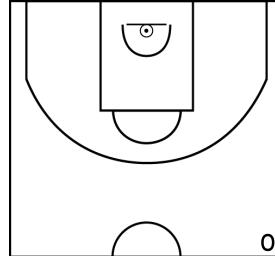
Rencontre: 1111 Date: 02/04/23 Heure: 10:00

Arbitre: JANIAC E DUHAMEL P

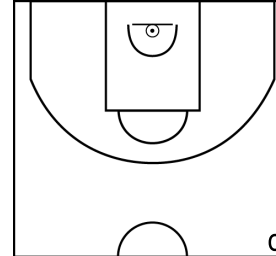
PIEDNOEL F. - BC PERRIERS / ANDELLE (A)



PÉRIODE 1



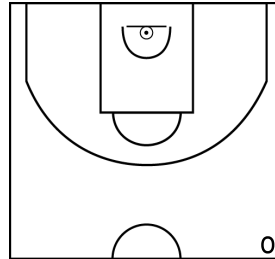
PÉRIODE 3



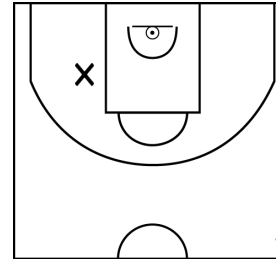
PROLONGATIONS



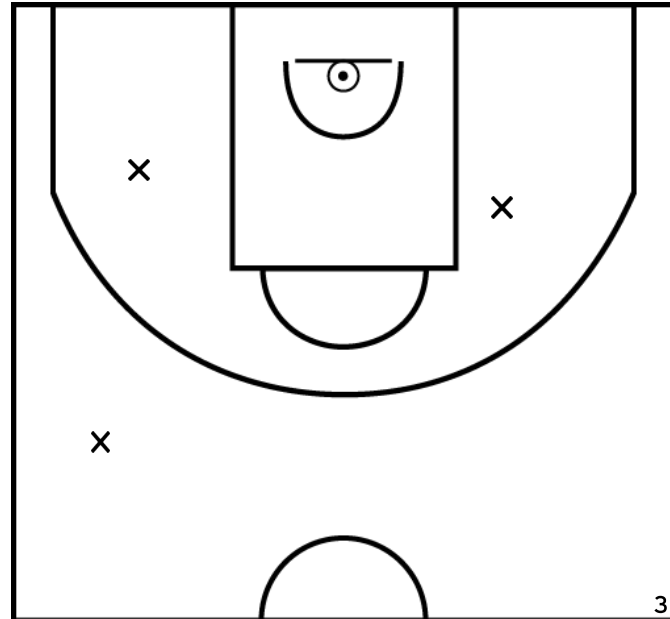
PÉRIODE 2



PÉRIODE 4



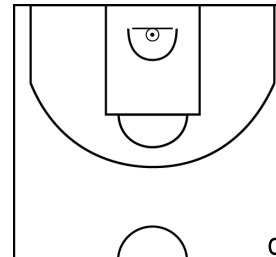
MASSON Y. - BC PERRIERS / ANDELLE (A)



PÉRIODE 1



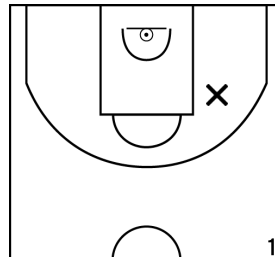
PÉRIODE 3



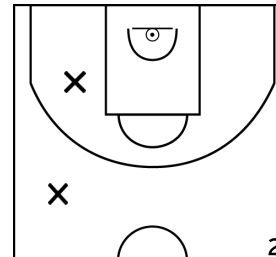
PROLONGATIONS



PÉRIODE 2



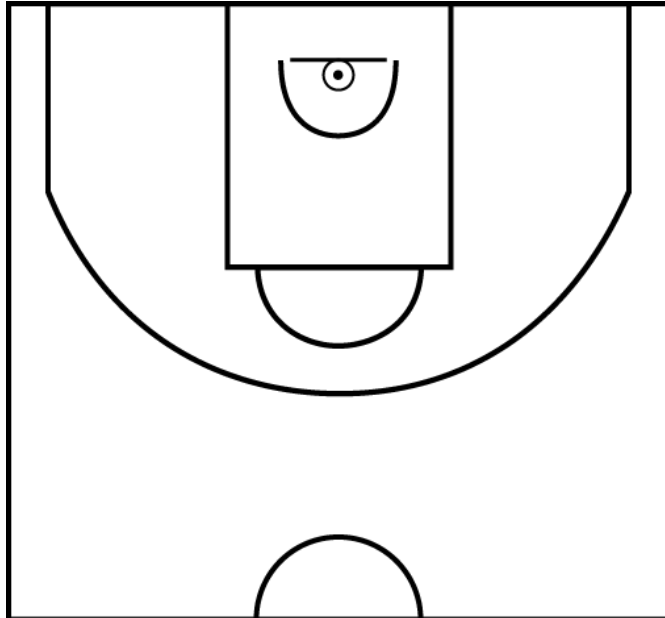
PÉRIODE 4



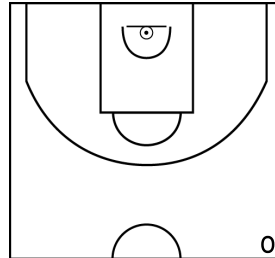
Rencontre: 1111 Date: 02/04/23 Heure: 10:00

Arbitre: JANIAK E DUHAMEL P

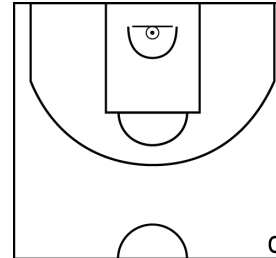
CARRE A. - BC PERRIERS / ANDELLE (A)



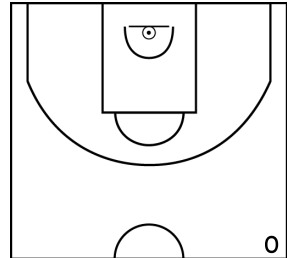
PÉRIODE 1



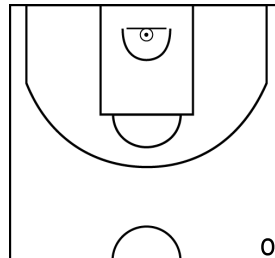
PÉRIODE 3



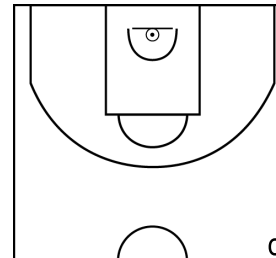
PROLONGATIONS



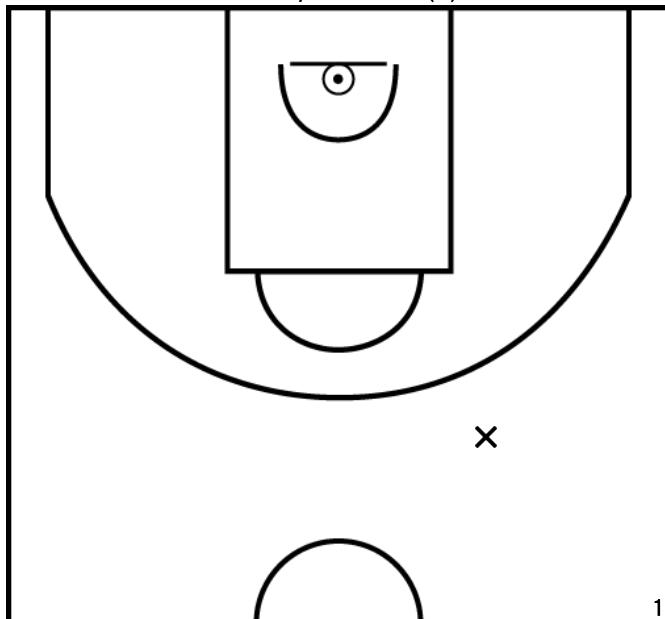
PÉRIODE 2



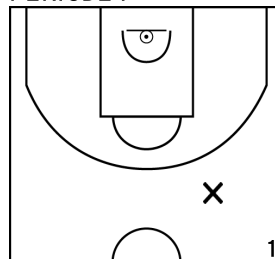
PÉRIODE 4



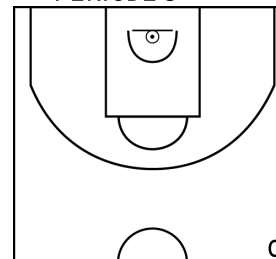
DANIEL C. - BC PERRIERS / ANDELLE (A)



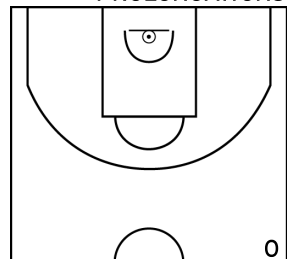
PÉRIODE 1



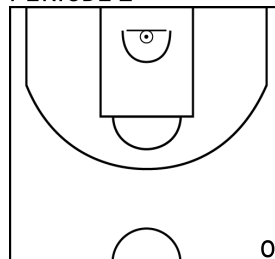
PÉRIODE 3



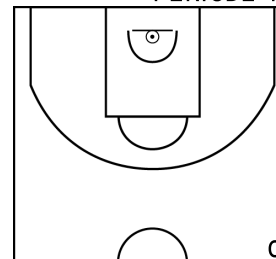
PROLONGATIONS



PÉRIODE 2



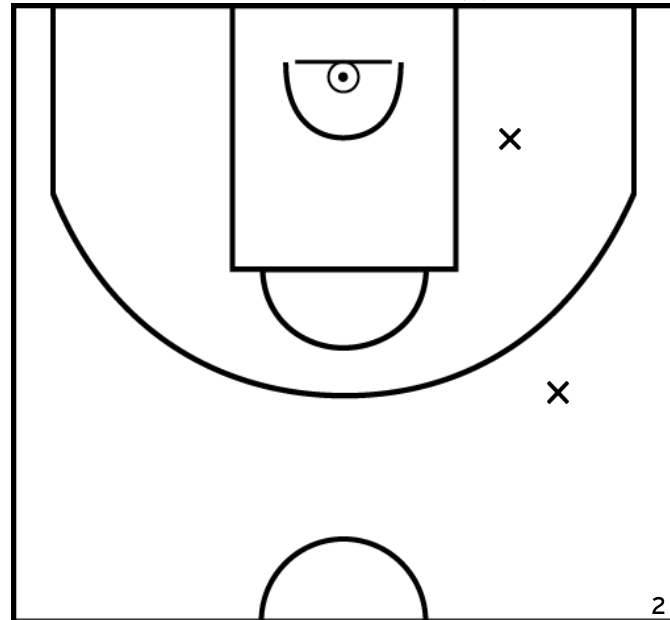
PÉRIODE 4



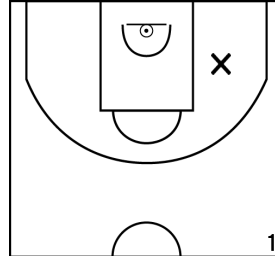
Rencontre: 1111 Date: 02/04/23 Heure: 10:00

Arbitre: JANIAC E DUHAMEL P

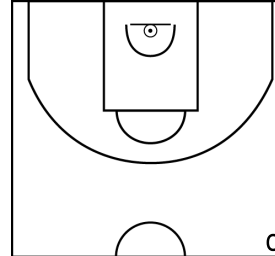
LE FLOCH M. - BC PERRIERS / ANDELLE (A)



PÉRIODE 1



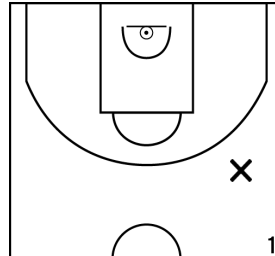
PÉRIODE 3



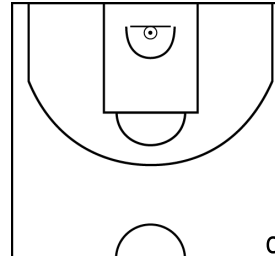
PROLONGATIONS



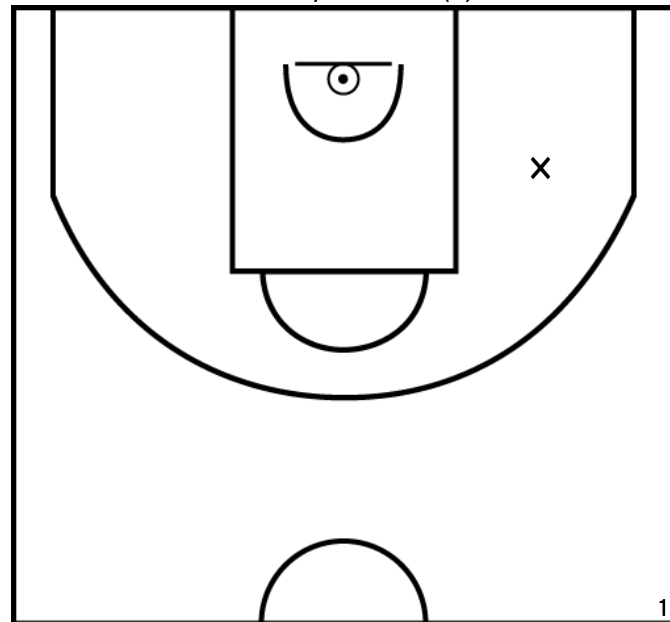
PÉRIODE 2



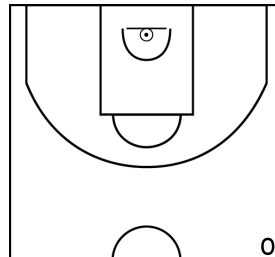
PÉRIODE 4



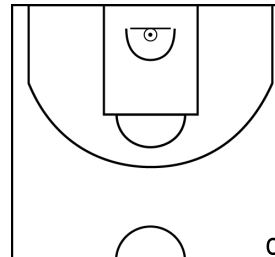
MASSON J. - BC PERRIERS / ANDELLE (A)



PÉRIODE 1



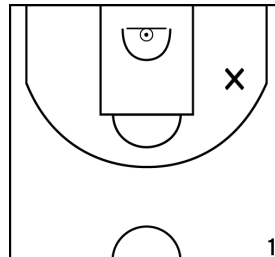
PÉRIODE 3



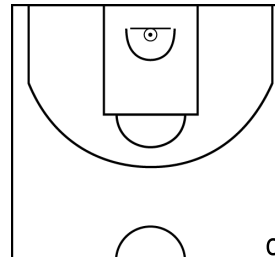
PROLONGATIONS



PÉRIODE 2



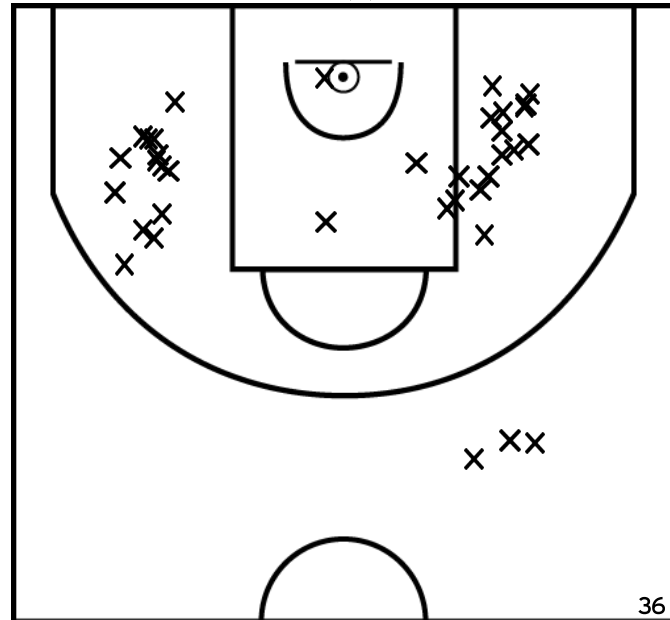
PÉRIODE 4



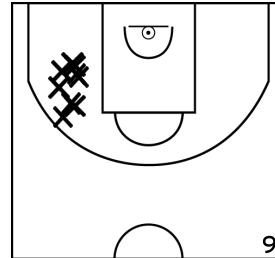
Rencontre: 1111 Date: 02/04/23 Heure: 10:00

Arbitre: JANIAC E DUHAMEL P

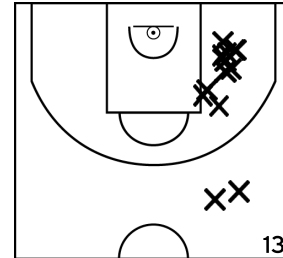
ÉQUIPE BC PONT DE L'ARCHE (B)



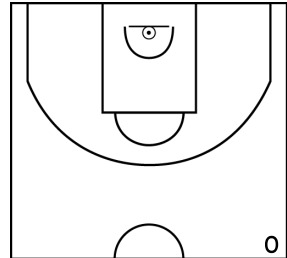
PÉRIODE 1



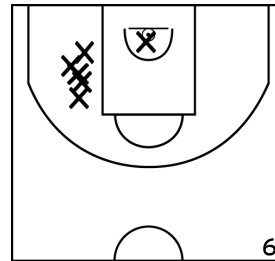
PÉRIODE 3



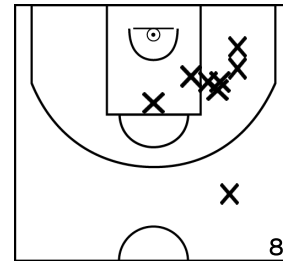
PROLONGATIONS



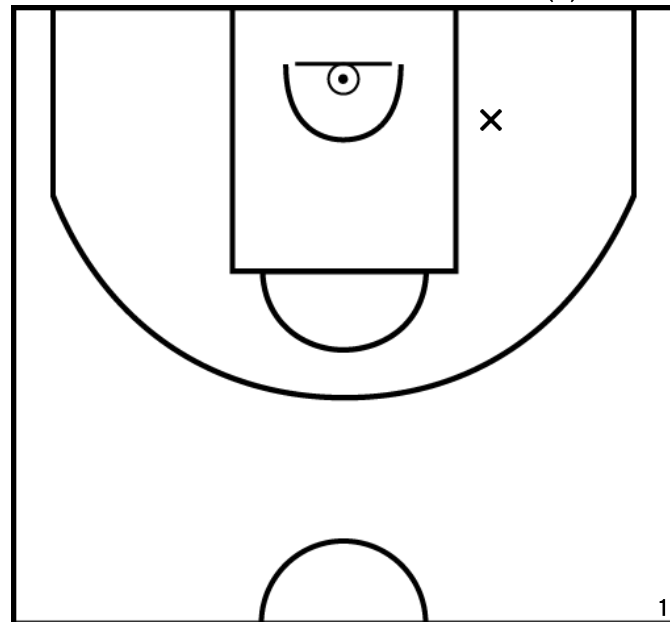
PÉRIODE 2



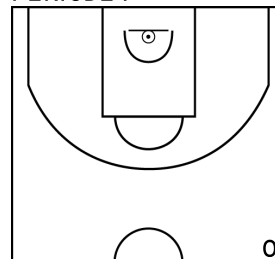
PÉRIODE 4



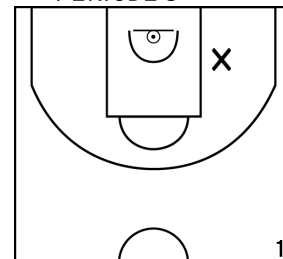
PEREIRA DE OLIVEIRA F. - BC PONT DE L'ARCHE (B)



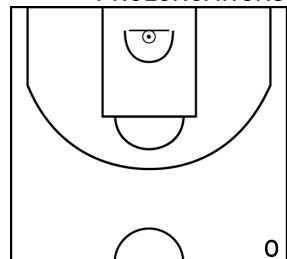
PÉRIODE 1



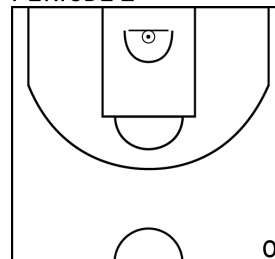
PÉRIODE 3



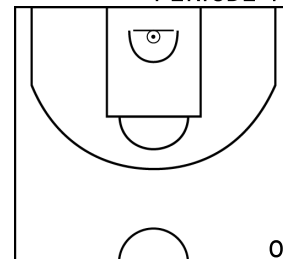
PROLONGATIONS



PÉRIODE 2



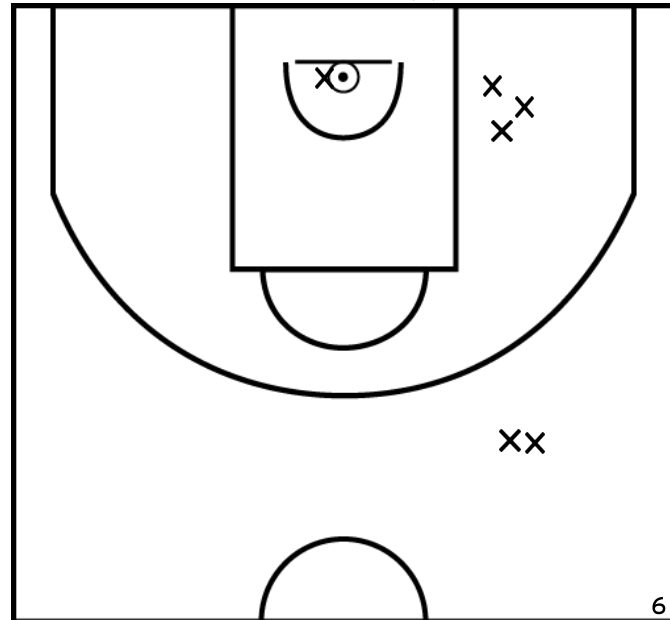
PÉRIODE 4



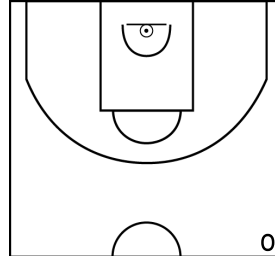
Rencontre: 1111 Date: 02/04/23 Heure: 10:00

Arbitre: JANIAK E DUHAMEL P

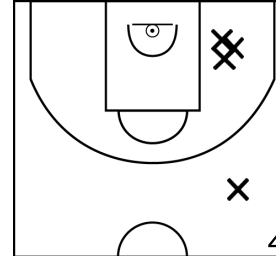
LECOMTE M. - BC PONT DE L'ARCHE (B)



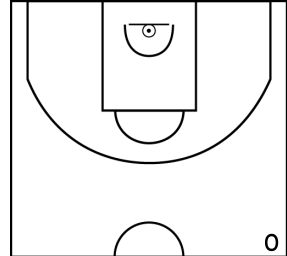
PÉRIODE 1



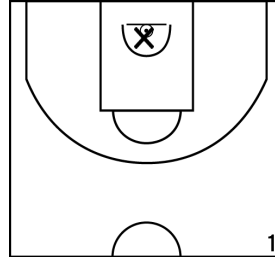
PÉRIODE 3



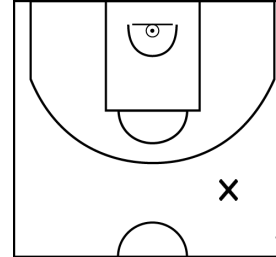
PROLONGATIONS



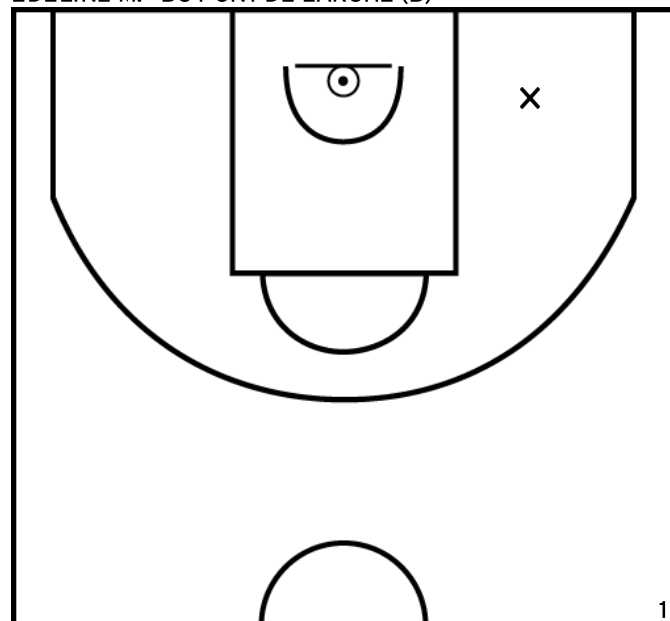
PÉRIODE 2



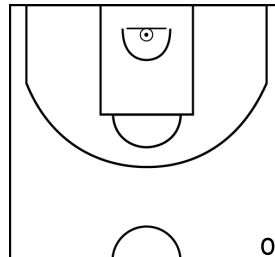
PÉRIODE 4



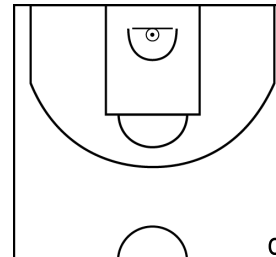
EDELINE M. - BC PONT DE L'ARCHE (B)



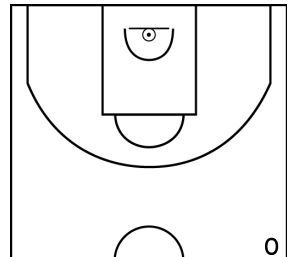
PÉRIODE 1



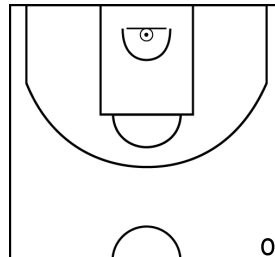
PÉRIODE 3



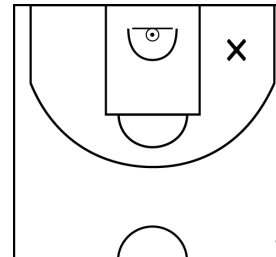
PROLONGATIONS



PÉRIODE 2



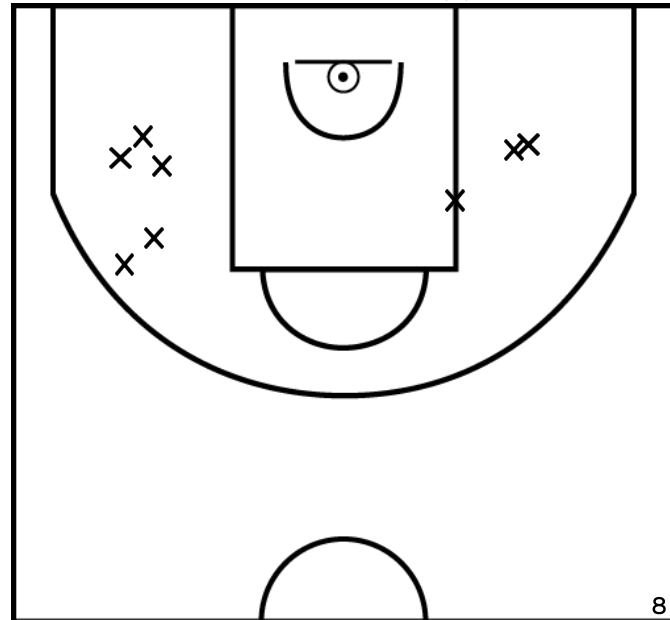
PÉRIODE 4



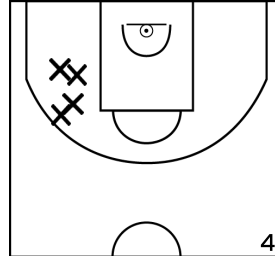
Rencontre: 1111 Date: 02/04/23 Heure: 10:00

Arbitre: JANIAK E DUHAMEL P

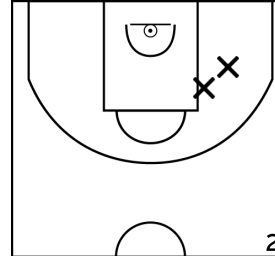
BLANCHARD M. - BC PONT DE L'ARCHE (B)



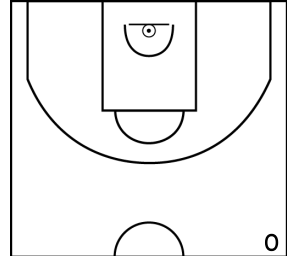
PÉRIODE 1



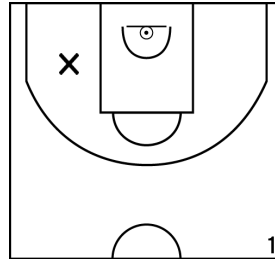
PÉRIODE 3



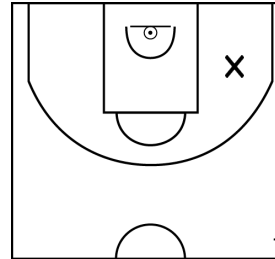
PROLONGATIONS



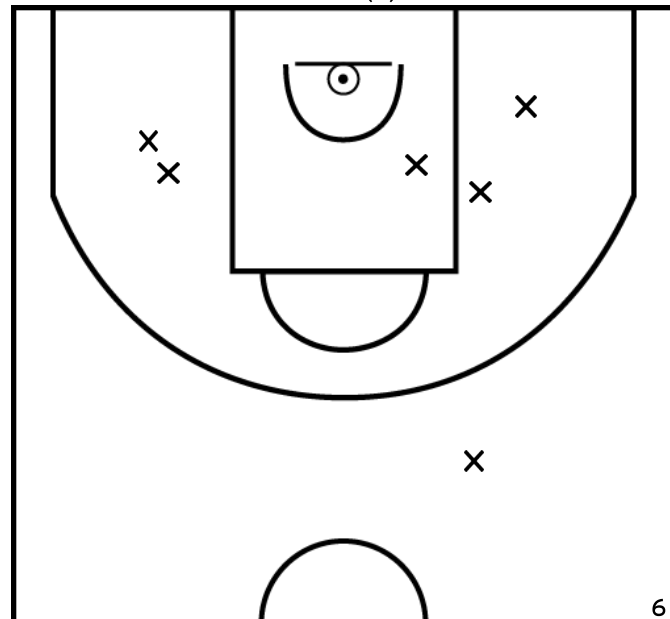
PÉRIODE 2



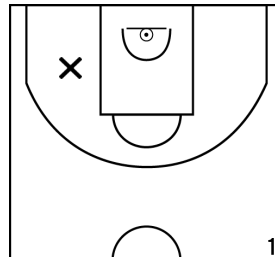
PÉRIODE 4



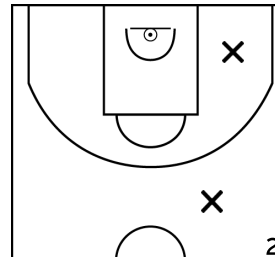
FAYOL K. - BC PONT DE L'ARCHE (B)



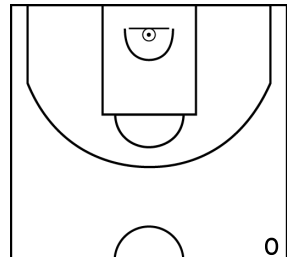
PÉRIODE 1



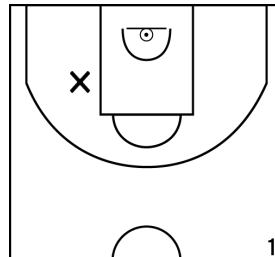
PÉRIODE 3



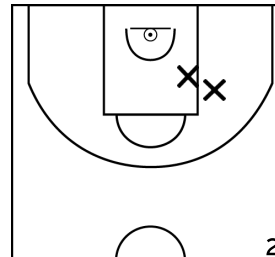
PROLONGATIONS



PÉRIODE 2



PÉRIODE 4

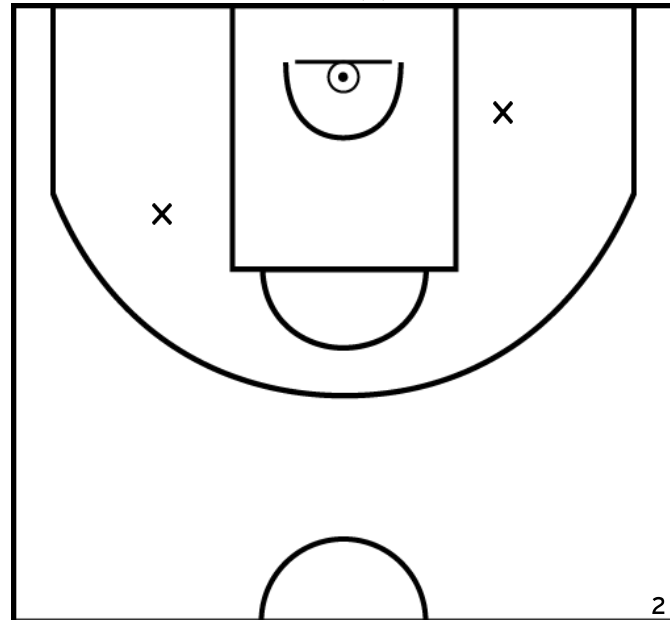




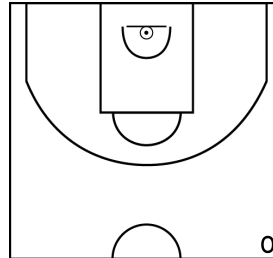
Rencontre: 1111 Date: 02/04/23 Heure: 10:00

Arbitre: JANIAK E DUHAMEL P

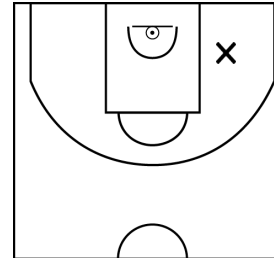
NETO C. - BC PONT DE L'ARCHE (B)



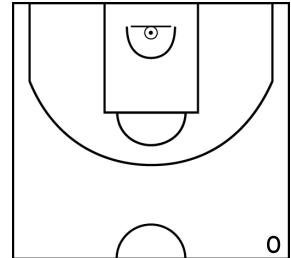
PÉRIODE 1



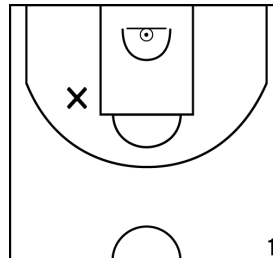
PÉRIODE 3



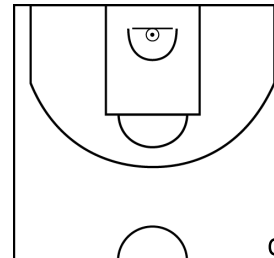
PROLONGATIONS



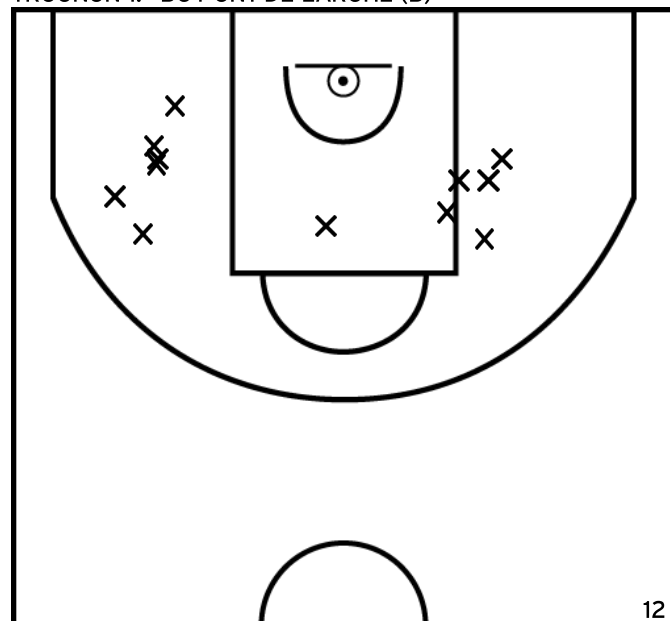
PÉRIODE 2



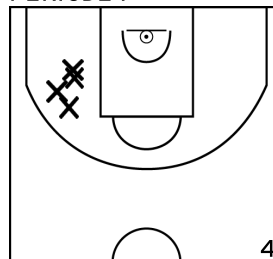
PÉRIODE 4



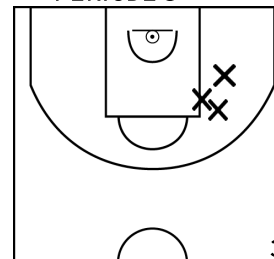
TROGNON T. - BC PONT DE L'ARCHE (B)



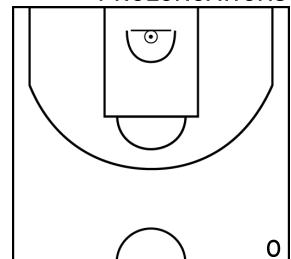
PÉRIODE 1



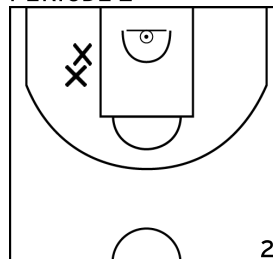
PÉRIODE 3



PROLONGATIONS



PÉRIODE 2



PÉRIODE 4

